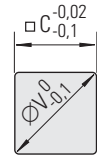
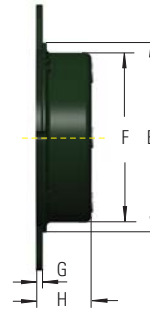
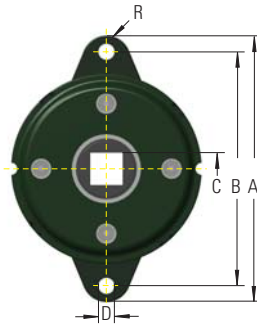


FDT-47 to 70



Recommended Drive Shaft Size

Models available FDT- . . .

Damping in both directions of rotation

	Damping torque Nm (at 20 rpm, 23°C)	Dimensions									
		A	B	C	D	E	F	G	H	R	V
FDT-47	2.0 +/- 0.3	65	56	8	4.5	47	42.8	1.6	10.3	4.5	10
FDT-57	4.7 +/- 0.5	79	68	10	5.5	57	52.4	1.6	11.2	5.5	13
FDT-63	6.7 +/- 0.7	89	76	12.5	6.5	63	58.6	1.6	11.3	6.5	17
FDT-70	8.7 +/- 0.8	95	82	12.5	6.5	70	65.4	1.6	11.3	6.5	17

Body material: Steel. Output shaft sleeve: Nylon (glass reinforced)

Temperature range: -10°C to 50°C

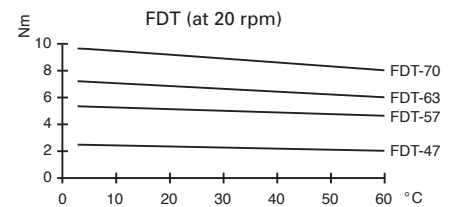
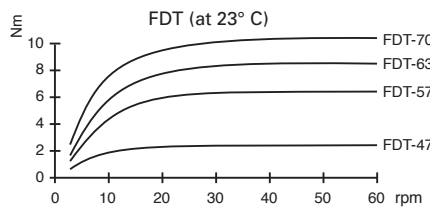
Operating fluid: Silicone Oil

Rotational speed max.: 50 rpm

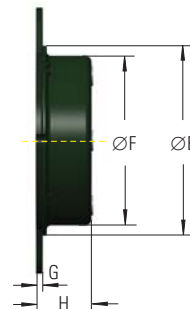
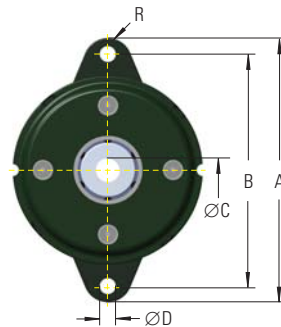
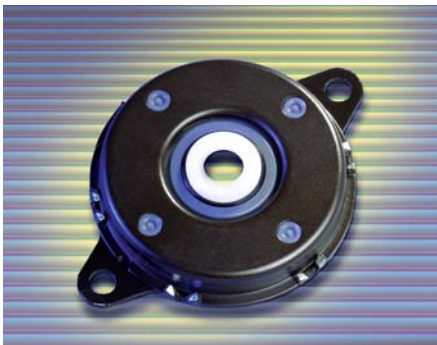
Cycle rate max.: 12 cycles per min.

Weight max.: 0.11 kg

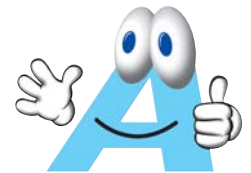
There is no support for the output shaft within the damper structure. External support must be provided for the shaft.



FDN-47 to 70



"You can change the direction of the damping torque, if necessary, by pushing out and turning the bearing bush!"



Models available FDN- . . .

Model			Dimensions									
Righthand damping (clockwise)	Lefthand damping (anti-clockwise)	Damping torque Nm	A	B	C	D	E	F	G	H	R	
FDN-47-R	FDN-47-L	2.0 +/- 0.3	65	56	6	4.5	47	42.8	1.6	10.3	4.5	
FDN-57-R	FDN-57-L	5.5 +/- 0.6	79	68	10	5.5	57	52.4	1.6	14	5.5	
FDN-63-R	FDN-63-L	8.5 +/- 0.8	89	76	10	6.5	63	58.6	1.6	13.9	6.5	
FDN-70-R	FDN-70-L	10.0 +/- 1.0	95	82	10	6.5	70	65.4	1.6	13	6.5	

Body material: Steel. Output shaft sleeve: Nylon (glass reinforced)

Temperature range: -10°C to 50°C

Operating fluid: Silicone Oil

Rotational speed max.: 50 rpm

Cycle Rate max.: 12 cycles per min.

Weight max.: 0.12 kg

There is no support for the output shaft within the damper structure. External support must be provided for the shaft.

Recommended shaft details:

for FDN-47 $\varnothing 6^{+0}_{-0.03}$

for FDN-57 to FDN-70 $\varnothing 10^{+0}_{-0.03}$

Hardness > HRC55, surface smoothness $R_z < 1\mu m$