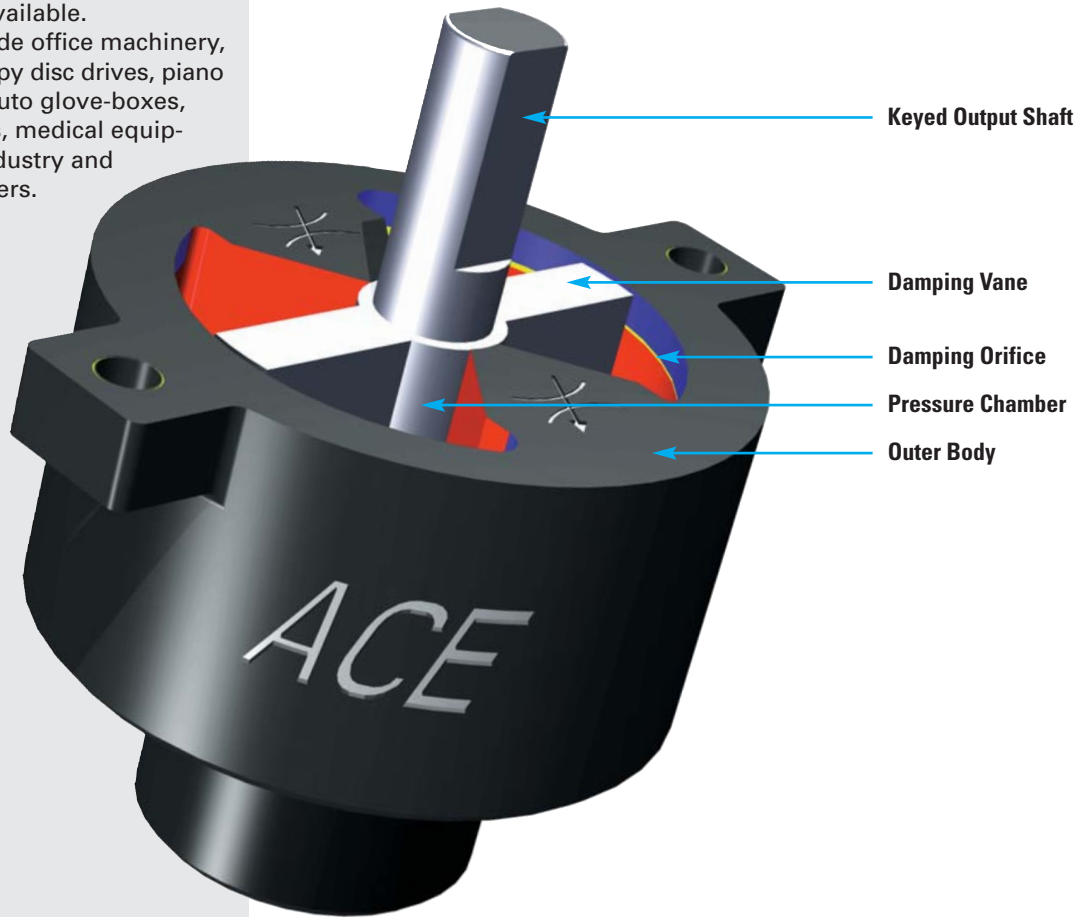


ACE Rotary Dampers are sealed maintenance free units. They are available with fixed or adjustable damping rates. The damping can be clockwise, anticlockwise or in both directions. The outer body is either plastic or metal depending upon model size. The output connection can be direct onto the keyed output shaft or indirect via a plastic gear (available with 4 standard modules). Plastic rack with modules of 0.5 to 1 are also available. Applications include office machinery, lids and flaps, floppy disc drives, piano lids, CD players, auto glove-boxes, vending machines, medical equipment, furniture industry and a multitude of others.

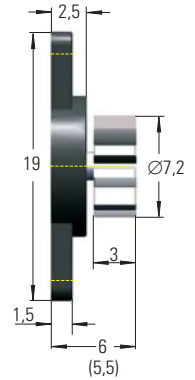
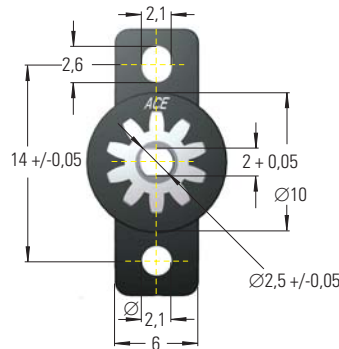


ACE Rotary Dampers guarantee the smooth controlled opening and closing of small lids, covers and flaps. They can be mounted directly on the pivot axis or can be used to provide linear damping by using a plastic gear and rack. They enable mechanisms to operate with a smooth controlled motion giving that "touch of quality" to whatever product they are used on. ACE rotary dampers are filled with a special high viscosity fluid (silicone type) and sealed for life. The fluid is passed through an orifice or groove by a rotating vane to provide damping resistance. The damping torque generated is determined by the fluid viscosity and by the orifice configuration.

Lifetime: With a max. rotational speed of 50 revs/min and a maximum of 10 cycles/min (12 cycles/min with the FDT/FDN types) the rotary dampers still provide more than 80% of their damping torque after a run of 50 000 cycles.



FRT-E2 (Bi-directional)



Dims. in () without gear

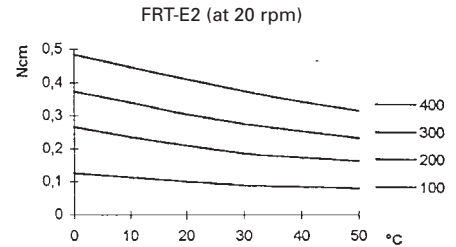
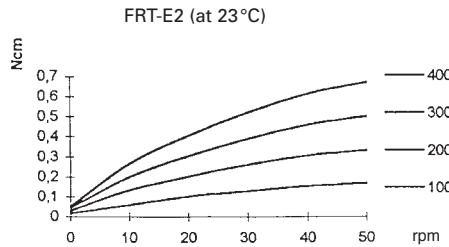
Models available FRT-E2 . . .

Damping action in both clockwise and anti-clockwise direction		Damping torque Ncm (Nominal 20 rpm, 23°C)
without gear	with gear	
FRT-E2-100	FRT-E2-100-G1	0.1 +/- 0.05
FRT-E2-200	FRT-E2-200-G1	0.2 +/- 0.07
FRT-E2-300	FRT-E2-300-G1	0.3 +/- 0.08
FRT-E2-400	FRT-E2-400-G1	0.4 +/- 0.10

Material: Polycarbonate plastic
Temperature range: 0°C to 50°C

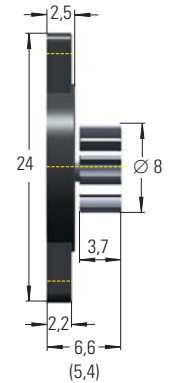
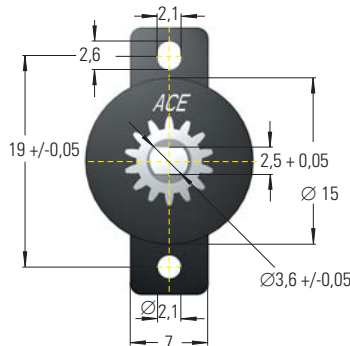
Gear data

Tooth: Involute
 Module: 0.6*
 Pressure angle: 20°
 No. of teeth: 10
 P.C.D.: 6 mm



* A 250 mm long plastic rack is available for use with this part see page 96.

FRT-G2 (Bi-directional)



Dims. in () without gear

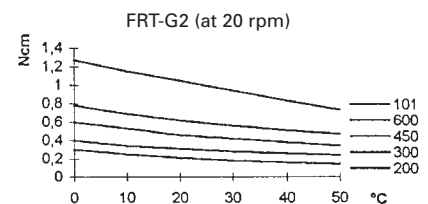
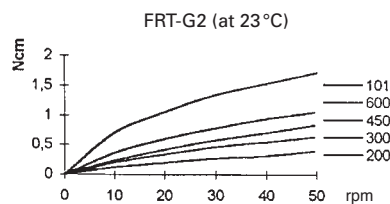
Models available FRT-G2 . . .

Damping action in both clockwise and anti-clockwise direction		Damping torque Ncm (Nominal 20 rpm, 23°C)
without gear	with gear	
FRT-G2-200	FRT-G2-200-G1	0.20 +/- 0.07
FRT-G2-300	FRT-G2-300-G1	0.30 +/- 0.08
FRT-G2-450	FRT-G2-450-G1	0.45 +/- 0.10
FRT-G2-600	FRT-G2-600-G1	0.60 +/- 0.12
FRT-G2-101	FRT-G2-101-G1	1.00 +/- 0.20

Material: Polycarbonate plastic
Temperature range: 0°C to 50°C

Gear data

Tooth: Involute
 Module: 0.5*
 Pressure angle: 20°
 No. of teeth: 14
 P.C.D.: 7 mm



* A 250 mm long plastic rack is available for use with this part see page 96.