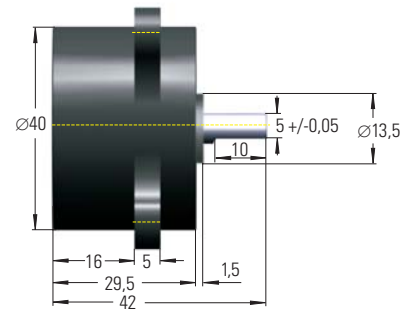
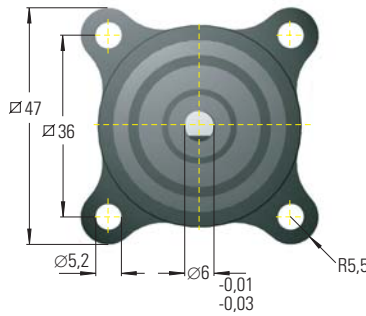


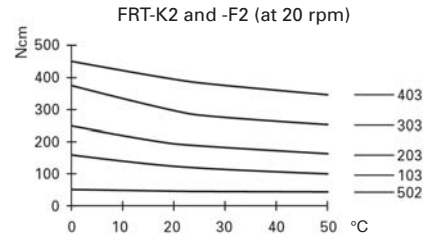
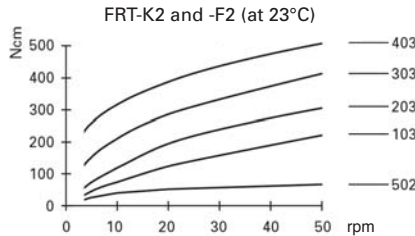
### FRT/FRN-K2 and FRT/FRN-F2



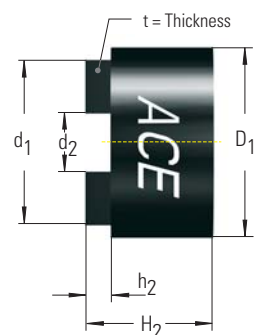
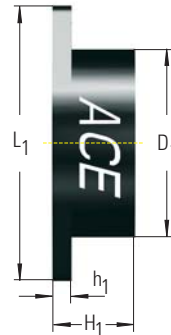
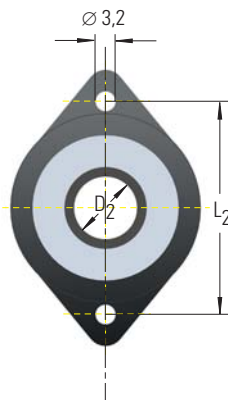
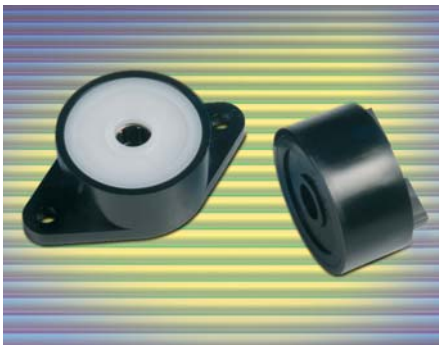
#### Models available FRT-F2 . . .

Model	Bi-directional damping	Right-hand damping clockwise	Left-hand damping anti-clockwise	Damping torque Ncm (Nominal 20 rpm, 23°C)
FRT-K2-502		FRN-K2-R502	FRN-K2-L502	50 +/- 10
FRT-K2-103		FRN-K2-R103	FRN-K2-L103	100 +/- 20
FRT-F2-203		FRN-F2-R203	FRN-F2-L203	200 +/- 40
FRT-F2-303		-	-	300 +/- 80
FRT-F2-403		-	-	400 +/- 100

**Material:** Polycarbonate plastic  
**Temperature range:** 0°C to 50°C  
**Weight max.:** 0.116 kg



### FFD



#### Models available FFD- . . .

Flange Type

Standard Type

Damping Option*	Model	Damping torque in Nm	Dimensions		Flange Type				Standard Type				
			D <sub>1</sub>	D <sub>2</sub>	H <sub>1</sub>	h <sub>1</sub>	L <sub>1</sub>	L <sub>2</sub>	d <sub>1</sub>	d <sub>2</sub>	H <sub>2</sub>	h <sub>2</sub>	t
Type S	FFD-25	0.1 / 0.5 / 1.0	25	6	13	3	42	34	21	6.2	16	4	4
	FFD-28	0.1 / 0.5 / 1.0	28	8	13	3	44	36	24	8.2	16	4	4
	FFD-30	0.1 / 0.5 / 1.0 / 1.5	30	10	13	3	46	38	26	10.2	16	4	4
Type W	FFD-25	1.0 / 1.5 / 2.0	25	6	19	3	42	34	21	6.2	22	4	4
	FFD-28	1.0 / 1.5 / 2.0	28	8	19	3	44	36	24	8.2	22	4	4
	FFD-30	1.5 / 2.0 / 2.5 / 3.0	30	10	19	3	46	38	26	10.2	22	4	4

\* Damping clockwise or anti-clockwise

**Material:** Polycarbonate plastic  
**Temperature range:** -10°C to 60°C  
**Rotational speed max.:** 30 rpm  
**Cycle rate max.:** 13 cycles per min.  
**Recommended Shaft details:**  $\varnothing^{+0}_{-0.03}$

#### Ordering Example

Friction Damper \_\_\_\_\_  
 Body  $\varnothing$  \_\_\_\_\_  
 Mounting Style (Flange = F, Standard = S) \_\_\_\_\_  
 Damping Option (S or W) \_\_\_\_\_  
 Damping Direction (right = R, left = L) \_\_\_\_\_  
 Damping torque see chart \_\_\_\_\_

#### FFD-25-FS-L-102

#### Damping torque

102 = 0.1 Nm  
 502 = 0.5 Nm  
 103 = 1.0 Nm  
 153 = 1.5 Nm  
 203 = 2.0 Nm  
 253 = 2.5 Nm  
 303 = 3.0 Nm