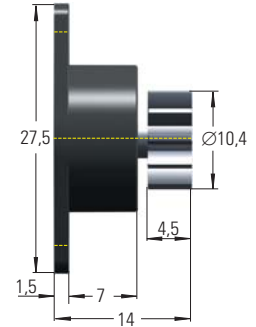
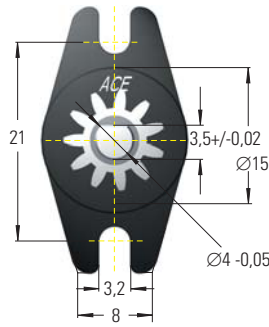


FRT-C2 and FRN-C2



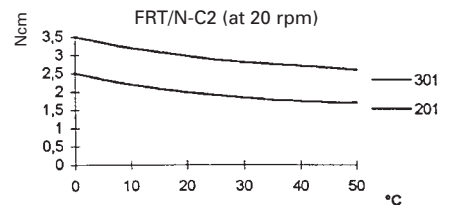
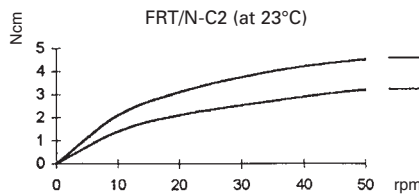
Models available FRT-C2 . . .

Model	Bi-directional damping	Right-hand damping (clockwise)	Left-hand damping (anti-clockwise)	Damping torque Ncm (Nominal 20 rpm, 23°C)
without gear	FRT-C2-201	FRN-C2-R201	FRN-C2-L201	2 +/- 0.6
without gear	FRT-C2-301	FRN-C2-R301	FRN-C2-L301	3 +/- 0.8
with gear	FRT-C2-201-G1	FRN-C2-R201-G1	FRN-C2-L201-G1	2 +/- 0.6
with gear	FRT-C2-301-G1	FRN-C2-R301-G1	FRN-C2-L301-G1	3 +/- 0.8

Material: Polycarbonate plastic
Temperature range: 0°C to 50°C

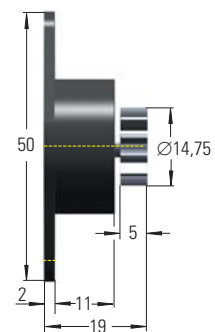
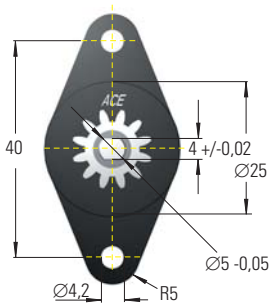
Gear data

Tooth: Involute
 Module: 0.8*
 Pressure angle: 20°
 No. of teeth: 11
 P.C.D.: 8.8 mm



* A 170 mm long flexible plastic rack and a 250 mm long rigid model are available for use with this part see page 96.

FRT-D2 and FRN-D2



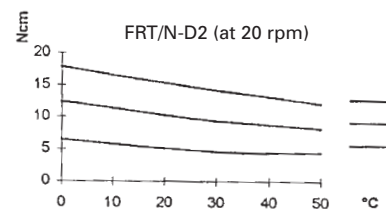
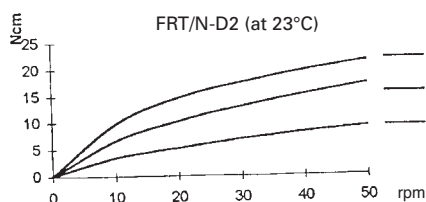
Models available FRT-D2 . . .

Model	Bi-directional damping	Right-hand damping (clockwise)	Left-hand damping (anti-clockwise)	Damping torque Ncm (Nominal 20 rpm, 23°C)
without gear	FRT-D2-501	FRN-D2-R501	FRN-D2-L501	5 +/- 1
without gear	FRT-D2-102	FRN-D2-R102	FRN-D2-L102	10 +/- 2
without gear	FRT-D2-152	FRN-D2-R152	FRN-D2-L152	15 +/- 3
with gear	FRT-D2-501-G1	FRN-D2-R501-G1	FRN-D2-L501-G1	5 +/- 1
with gear	FRT-D2-102-G1	FRN-D2-R102-G1	FRN-D2-L102-G1	10 +/- 2
with gear	FRT-D2-152-G1	FRN-D2-R152-G1	FRN-D2-L152-G1	15 +/- 3

Material: Polycarbonate plastic
Temperature range: 0°C to 50°C

Gear data

Tooth: Involute
 Module: 1.0*
 Pressure angle: 20°
 No. of teeth: 12
 P.C.D.: 12.75 mm



* A 250 mm and 500 mm long plastic rack is available for use with this part see page 96.