

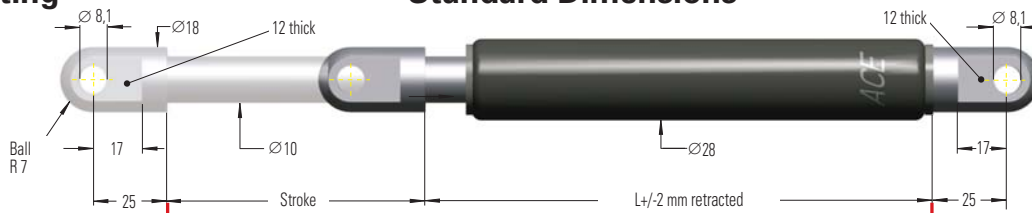


### End Fitting

### Standard Dimensions

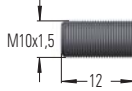
### End Fitting

A10



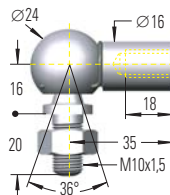
Eye A10

B10



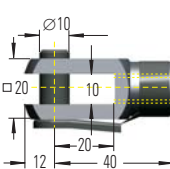
Stud Thread B10

C10



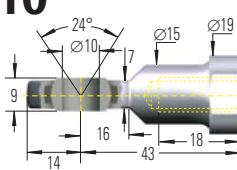
Angle Ball Joint C10

D10



Clevis Fork D10

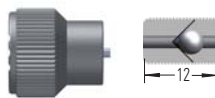
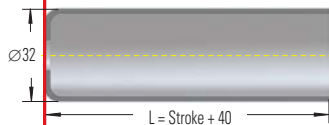
E10



Swivel Eye E10

WZ10-28

Rod Shroud



UZ10 V10

Adjuster Knob

Adjustment Valve

See page 120.

### Dimensions

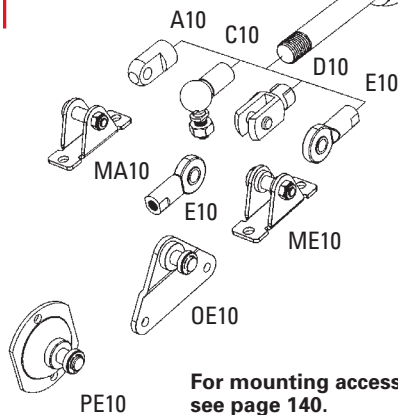
Type	Stroke mm	L Retracted
GZ-28-30	30	130
GZ-28-50	50	150
GZ-28-100	100	200
GZ-28-150	150	250
GZ-28-200	200	300
GZ-28-250	250	350
GZ-28-300	300	400
GZ-28-350	350	450
GZ-28-400	400	500
GZ-28-450	450	550
GZ-28-500	500	600
GZ-28-550	550	650
GZ-28-600	600	700
GZ-28-650	650	750

### Ordering Example GZ-28-150-EE-V-800

Type (Pull Type) \_\_\_\_\_  
 Body ø (28 mm) \_\_\_\_\_  
 Stroke (150 mm) \_\_\_\_\_  
 Piston Rod End Fitting E10 \_\_\_\_\_  
 Body End Fitting E10 \_\_\_\_\_  
 Valve V10 \_\_\_\_\_  
 Traction Force F<sub>1</sub> 800 N \_\_\_\_\_

The end fittings are interchangeable and must be positively secured by the customer to prevent unscrewing (i.e. Loctite).  
 For adjustment valve add suffix -V  
 For mounting accessories see page 140.

GZ-28



For mounting accessories see page 140.

### Technical Data

ACE traction gas springs are self-contained and maintenance free. Standard gas springs with valve – ex stock.  
**Mounting position:** Can be mounted in any position. Install mechanical stop in extended position.  
**Progression:** approx. 20 %, F<sub>2</sub> max. 1440 N.  
**Operating temperature range:** -20°C to +80°C.  
**Lifetime approx. 2000 m.**  
**Operating fluid:** Nitrogen gas and oil (for lubrication).  
**Available traction force range F<sub>1</sub> at 20°C:** 150 to 1200 N.  
**Material:** Body: powder coated steel. Piston rod: hard chrome plated. End fittings: zinc plated steel.  
**Note:** secure end fittings with Loctite or similar.  
**To special order:** Protective rod shroud (dim L + 10 mm), special force curves, special lengths, alternative end fittings, stainless steel.