

ENERPAC 

Bench and Workshop Presses



ENERPAC[®]
INDUSTRIAL TOOLS

No workshop can do without one

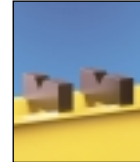
These new Enerpac 10 to 200 ton presses with maximized daylight and bed width offer more than enough room to accommodate the widest range of applications.

VLP-Series, Bench and Workshop Presses

▼ From left to right: VLP-506GPECW, VLP-1006GPERW, VLP-106P142, VLP-256PAT1



No Workshop can do without one



V-Blocks

To facilitate positioning of pipes and bars, or placed upside-down, to serve as a convenient worktable.

Featuring precise fit into the press bolster. Each model number includes two V-blocks.

To be used with VLP-press ton	V-Blocks Model Number
10	VB-10
25	VB-25
50	VB-50
100	VB-100
200	VB-200



Centered Manual Valves

Manual 3-position valves on electric Hushh pumps (GPEC-models) supplied on VLP-series presses

automatically move to the tandem centre position for safety reasons.

- Quality welded frame for maximum strength and stability
- Optimum daylight and bed width
- With hand pump, air or electric driven power source
- Single or double-acting GOLDEN RING DESIGN cylinders
- Standard glycerine filled gauge with dual scale reading in kN and bar
- Moveable pump table on presses with electric pump allows for easy side loading for large workpieces
- Height adjustment of lower bed on 25 ton press with a winch
- Unique "Hydrajust" bed positioning device on 50, 100 and 200 ton press allows adjustment of the lower bed

▼ SELECTION CHART

Press Capacity ton (kN)	Maximum Daylight (mm)		Press Model Number	Power Source						Cylinder			
	Vertical	Horizontal		Pump Type			Valve Type		Pump Model Nr.	Stroke (mm)	Cylinder Model Nr.	Stroke (mm)	Cylinder Model Nr.
				Man.	Elec.	Air	Man.	Elec.					
10 (101)	430	432	VLP-106P142	●			●		P-142	●		155	RC-106
	430	432	VLP-106PAT1			●	●		PATG-1102N	●		155	RC-106
25 (232)	1225	510	VLP-256P392	●			●		P-392	●		159	RC-256
	1225	510	VLP-256PAT1			●	●		PATG-1102N	●		159	RC-256
50 (498)	994	1000	VLP-506P802	●			●		P-802	●		159	RC-506
	994	1000	VLP-506GPERW		●		●		GPER-5410WSN		●	155	RR-506
	994	1000	VLP-506GPECW		●		●		GPEC-5410WSN		●	155	RR-506
	994	1000	VLP-5013GPERW		●		●		GPER-5410WSN		●	333	RR-5013
100 (933)	989	1000	VLP-1006GPECW		●		●		GPEC-2410WN		●	168	RR-1006
	989	1000	VLP-1006GPERW		●		●		GPER-2410WN		●	168	RR-1006
	989	1000	VLP-10013GPERW		●		●		GPER-2410WN		●	333	RR-10013
200 ¹⁾	1340	1220	VLP-20013GPERW		●		●		GPER-3420WN		●	333	RR-20013

1) 1995 kN



= Single-Acting



= Double acting

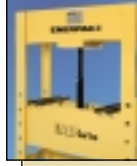
Bench and Workshop Presses



Press Gauges

All presses include a gauge and gauge adaptor, matching the press capacity.

Press Capacity ton	Gauge Model Number	Adaptor Model Number
10	GF-10B	GA-4
25	GF-20B	GA-2
50	GF-50B	GA-2
100	GF-871B	GA-3
200	GF-200B	GA-2



"Hydrajust" Bed Positioning

Allows vertical adjustment of the lower bed on the 50, 100 and 200 ton VLP press.



The "Hydrajust" bed positioning is not designed to withstand full cylinder capacity, only to be used for bed adjustment.

VLP Series



Capacity:

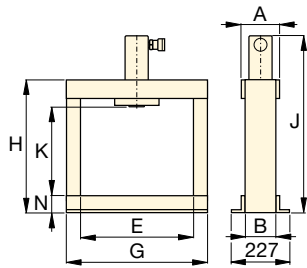
10 - 200 ton

Maximum Daylight x Width:

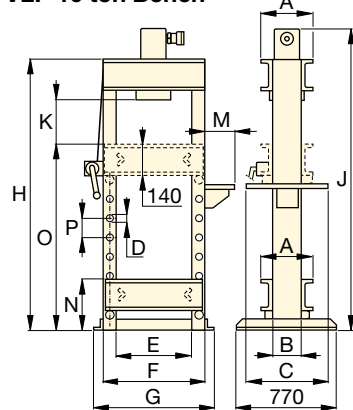
1340 x 1220 mm

Maximum Operating Pressure:

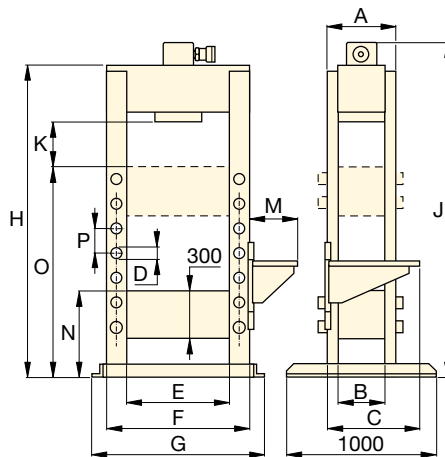
700 bar



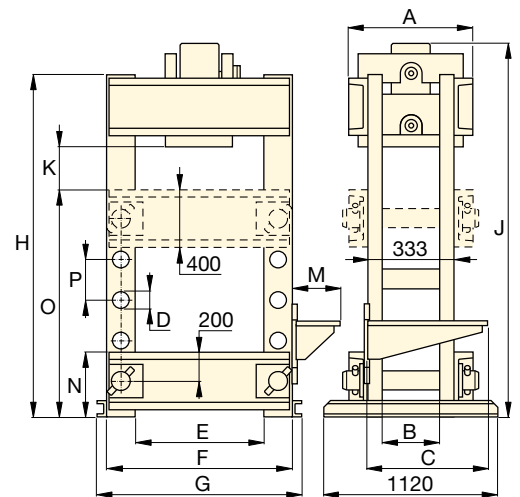
VLP 10 ton Bench



VLP 25 ton



VLP 50 and 100 ton

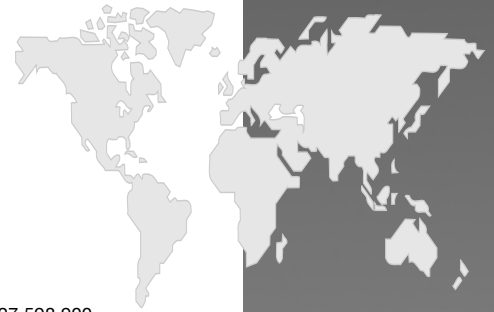


VLP 200 ton

Speed (mm/sec)*		Dimensions (mm)														Press Model Number	
Rapid Advance	Pressing	A	B	C	D	E	F	G	H	J	K	M	N	O	P		(kg)
{2,5}*	{0,6}*	110	80	-	-	432	-	542	620	748	430	-	80	-	-	50	VLP-106P142
10,0	1,8	110	80	-	-	432	-	542	620	748	430	-	80	-	-	55	VLP-106PAT1
{3,4}*	{0,7}*	260	140	510	32	510	630	700	1622	1740	370	140	212	1070	122	160	VLP-256P392
5,0	0,8	260	140	610	32	510	630	700	1622	1740	370	323	212	1070	122	165	VLP-256PAT1
{5,5}*	{0,3}*	290	250	560	32	1000	1200	1360	1879	1879	244	425	540	1290	150	960	VLP-506P802
3,8	3,8	290	250	560	32	1000	1200	1360	1879	1879	244	425	540	1290	150	1010	VLP-506GPERW
3,8	3,8	290	250	560	32	1000	1200	1360	1879	1879	244	425	540	1290	150	1025	VLP-506GPECW
3,8	3,8	290	250	560	32	1000	1200	1360	1879	2042	244	425	540	1290	150	1045	VLP-5013GPERW
6,4	0,7	400	340	560	40	1000	1240	1400	1879	1885	239	425	540	1290	150	1400	VLP-1006GPECW
6,4	0,7	400	340	560	40	1000	1240	1400	1879	1885	239	425	540	1290	150	1420	VLP-1006GPERW
6,4	0,7	400	340	560	40	1000	1240	1400	1879	2050	239	425	540	1290	150	1465	VLP-10013GPERW
5,1	0,5	553	233	560	76	1220	1620	1740	2285	2370	377	425	453	1415	254	2000	VLP-20013GPERW

* {...} = advance speed in mm per handpump stroke.

Bench and Workshop Presses



ENERPAC

The Industrial Tools Line

Cylinders

- General purpose
- Pancake with locknut
- Low height
- Heavy duty
- Hollow plunger
- Industrial
- Pull
- High tonnage
- Synchronous Lift Systems
- Stage Lift Systems
- Jacks

Pumps

- Manual
- Electric driven
- Compressed air driven
- Petrol driven

System Components and Valves

- Hoses and couplers
- Gauges
- Fittings, Manifolds
- Valves

Presses

- Bench and Workshop
- Roll Frame
- C-clamp, Arbor
- Load Cells, Tension Meters

Pullers

- Master Puller Sets
- Grip, Cross Bearing Pullers
- Mechanical and Hydraulic Posi Lock® Pullers

Tools

- Maintenance sets
- Punches
- Spread Cylinders
- Machine Lifts
- Load Skates
- Cutters
- Pipe Benders

Bolting Tools

- Nut Splitters
- Flange Spreaders
- Wedge Spreaders
- Flange Alignment Tools
- Torque Wrenches
- Torque Wrench Pumps
- Twin Safety Hoses

Enerpac Worldwide Locations

Australia

Tel: +61 297 438 988
Fax: +61 297 438 648

Canada

Tel: +1 905 564 5749
Fax: +1 905 564 0305
Toll Free:
Tel: +1 800 268 4987
Fax: +1 800 461 2456

China, Shanghai

Tel: +86 21 5866 9099
Fax: +86 21 5866 7156
Beijing City
Tel: +86 10 845 36166
Fax: +86 10 845 36220

France, Turkey, Greece, Africa, Middle East

Tel: +33 1 601 368 68
Fax: +33 1 692 037 50

Germany, Switzerland, Austria, Eastern Europe

Tel: +49 211 471 490
Fax: +49 211 471 49 28

India

Tel: +91 22 778 1779
Fax: +91 22 778 1473

Italy

Tel: +39 2 486 1111
Fax: +39 2 4860 1288

Japan

Tel: +81-048-430-2311
Fax: +81-048-430-1117

Mexico

Tel: +52 771 33700
Fax: +52 771 35232

The Netherlands, Belgium, Luxembourg, Sweden, Denmark, Norway, Finland, United Kingdom, Ireland

Tel: +31 318 535 911
Fax: +31 318 525 613
+31 318 535 848

UK, Ireland

Tel: +44 01527 598 900
Fax: +44 01527 585 500

Singapore

Tel: +65 6484 5108
Fax: +65 6484 5669

South Korea

Tel: +82 32 675 08 36
Fax: +82 32 675 30 02/73

Spain, Portugal

Tel: +34 91 661 11 25
Fax: +34 91 661 47 89

USA, Latin America and Caribbean

Tel: +1 262 781 6600
Fax: +1 262 781 1049
User inquiries:
Tel: +1 800 433 2766
Distributor inquiries/orders:
Tel: +1 800 558 0530



The Enerpac E211e Workholding Catalog

All over the world, Enerpac Workholding products are used to provide powerful clamping and positioning force to every type of manufacturing process. Whether your workpiece needs to be clamped, punched, pressed, positioned or pulled, Enerpac Workholding is there to provide innovative solutions to increase your product quality and production output.

- Swing Cylinders • Work Supports • Linear Cylinders • Power Sources
- Valves • System Components



The Full Enerpac Industrial Tool Line E324e

Ask for your free copy of the Enerpac Industrial Tools catalog for information about Enerpac High Force Tools. The catalog contains our full line of cylinders, pumps, tools, valves and accessories.

e-mail: info@enerpac.com
Internet: www.enerpac.com

Your Enerpac Distributor