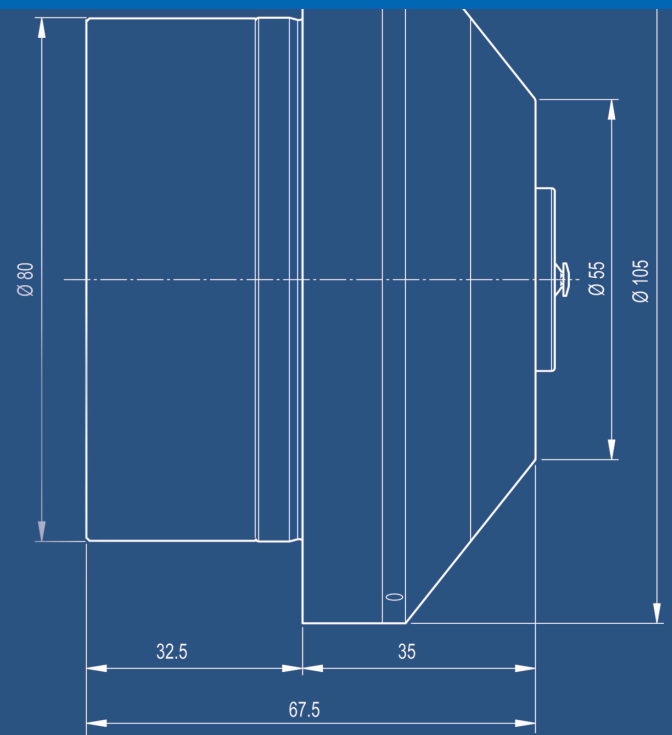
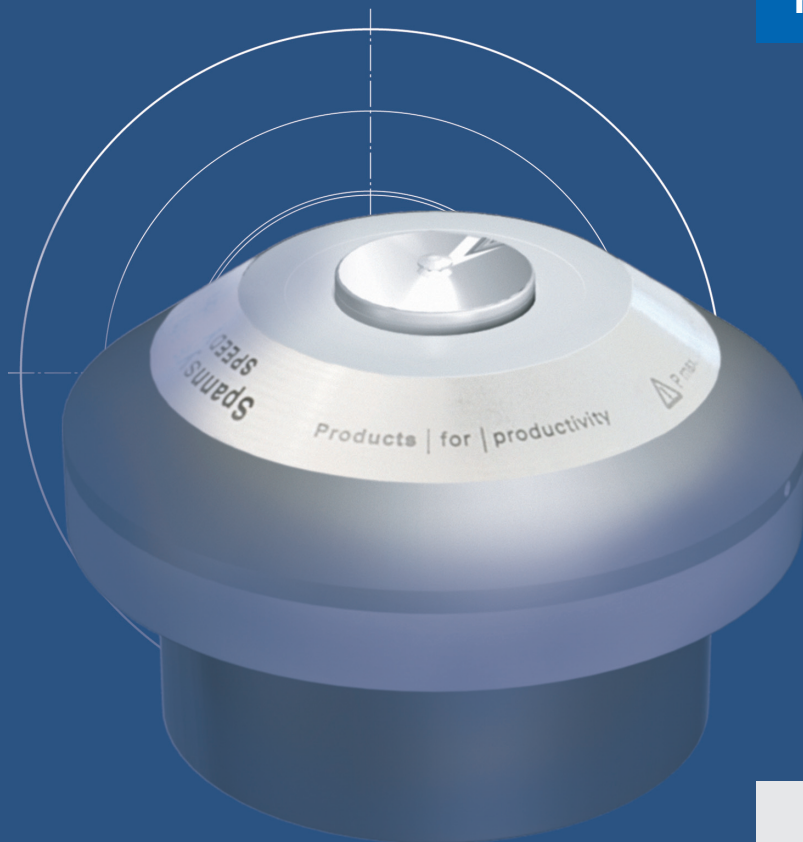




**STARK**

## Hydraulic double action for quicker and safer mounting solutions

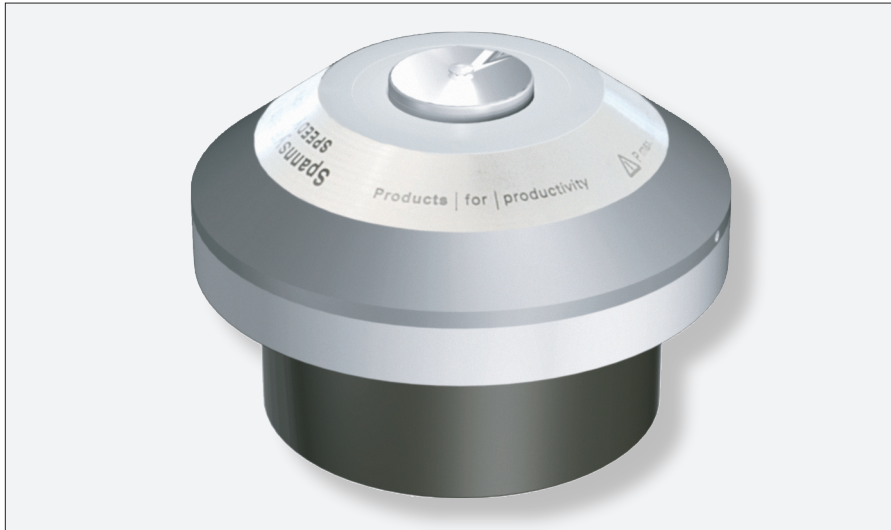
**Extremely quick clamping and releasing for short cycle times**



**SPEEDY** hydratec

**Zero point mounting system**

## SPEEDY hydratec – impervious to dirt because of its central locking and the conical shape



**SPEEDY hydratec** - locks and releases hydraulically

With the **SPEEDY hydratec** STARK has developed a compact, hydraulic double action clamping element.

Due to the extremely short clamping cycles, the **SPEEDY hydratec** is well suited for automated applications with short cycle times.

- Extremely quick clamping and releasing
- Small, compact size makes tight gauges possible.
- Adjustable draw in force up to 20 kN
- Long service life
- Integrated mounting and clamping checks (optional)
- extremely compatible to shavings

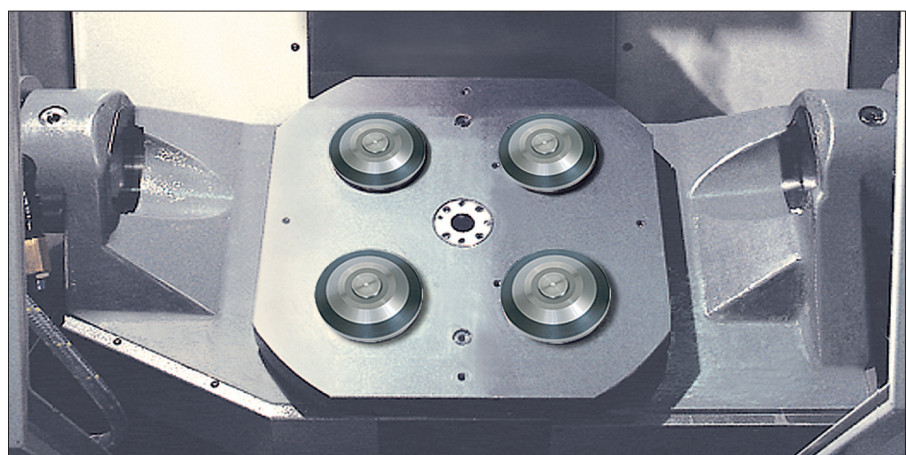
### Optimal space utilization with two sizes

Two different sizes with the same draw in force of 20 kN permit optimal space utilization. Naturally, the **SPEEDY hydratec** is compatible with all common coupling systems. This enables a safe palletizing of hydraulically mounted workpiece s.

The central locking system and the conical shape make the **SPEEDY hydratec** impervious to dirt and well suited for full automatic processes.



**SPEEDY hydratec** - 20 kN draw in force at 140 bar



For assembly directly on the machine table