

Adjustable toggle locators

with O-ring



Material:

Body in tempered steel.

Ball:

Form C, F, tool steel.

Form K POM.

Form O stainless steel with diamond surface.

Form P stainless steel with polyurethane surface.

Surface finish:

Body tempered, black oxide finish.

Ball:

Form C, F hardened, black oxide finish.

Form K POM ball white.

Form O surface comparable with abrasive grit size 100.

Form P polyurethane, Shore hardness 60°.

Sample order:

nln 02006-106X040

Note:

The toggle locators are used to support and clamp unmachined and machined workpieces.

In addition, they serve as stops, supports and pressure pieces in jig- and toolmaking.

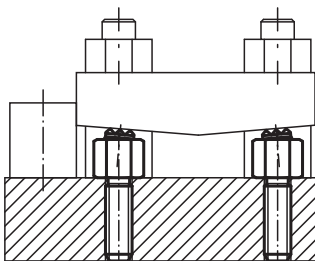
Ball secured against torsion.

Form O: The abrasive diamond surface is welded firmly to the ball. It is ideally suited to supporting smooth or slippery applications with a minimum of clamping pressure. This allows the diamond particles to get a firm grip on a very small area with minimum damage to the surface. The diamond surface offers excellent wear resistance.

Form P: The polyurethane surface is vulcanised firmly to the ball. It is abrasion-resistant and does not discolour. It offers optimum protection against damage to delicate surfaces. The pearl-like surface gives a firm grip and allows air to escape so as to prevent any suction effect between the contact surface and the toggle locator.

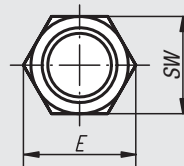
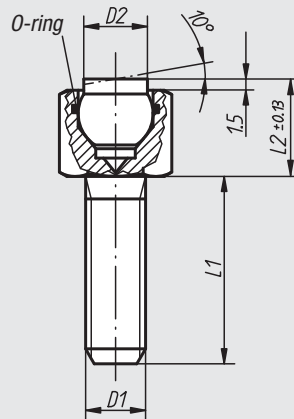
Advantages:

- The built-in O-ring keeps the ball in its place and prevents dirt and foreign particles from entering.
- This assures smooth and steady movements.

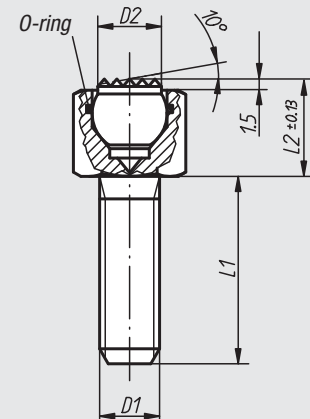


Form C
plain, flattened steel ball

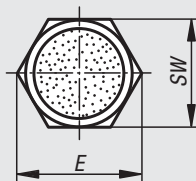
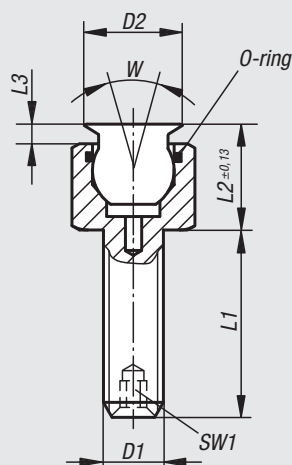
Form K
plain, flattened POM ball



Form F
serrated, flattened steel ball



Form O
stainless steel ball with
diamond surface



Form P
stainless steel ball with
polyurethane surface

