

# Locating cylinders



**Material:**  
Locating cylinder tempered steel;  
balls roller bearing steel

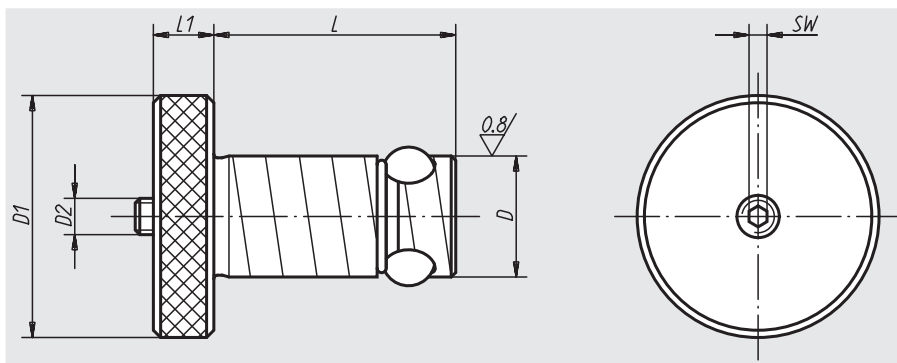
**Surface finish:**  
Locating cylinder heat-treated, black oxide finish;  
balls hardened, natural finish

**Sample order:**  
nlm 03153-16020

**Note:**  
By tightening the moving screw (D2) the centre ball is pressed downwards and in turn forces the three locking balls outwards, where they are locked in the tapered receiver bushing.

**With this easy-to-operate system machine set-up times are up to twelve times shorter than when conventional methods are used.**

Repair Kit:



Order No.	Grid plate thickness $\pm 0,05$	D	D1	D2	L	L1	SW	Holding force F kN	Tightening torque max. Nm	Approx. weight kg	Order No. Repair Kit
03153-13013	13	13	22	M5	27,6	6	2,5	3,3	1	0,040	03153-913013
03153-13020	20	13	22	M5	34,6	6	2,5	3,3	1	0,050	03153-913020
03153-16020	20	16	32	M6	36,5	8	3	5,3	3	0,100	03153-916020
03153-16025	25	16	32	M6	41,5	8	3	5,3	3	0,110	03153-916025
03153-20020	20	20	40	M6	39,5	10	3	13,3	4	0,200	03153-920020
03153-20025	25	20	40	M6	44,5	10	3	13,3	4	0,230	03153-920025
03153-25020	20	25	45	M8	44	10	4	30	9	0,270	03153-925020
03153-25025	25	25	45	M8	49	10	4	30	9	0,300	03153-925025
03153-30020	20	30	50	M10	49	13	5	44	15	0,480	03153-930020
03153-30025	25	30	50	M10	54	13	5	44	15	0,520	03153-930025
03153-35020	20	35	60	M12	51	13	6	68	25	0,580	03153-935020
03153-35025	25	35	60	M12	56	13	6	68	25	0,640	03153-935025
03153-35040	40	35	60	M12	71	13	6	68	25	0,750	03153-935040
03153-35050	50	35	60	M12	81	13	6	68	25	0,810	03153-935050
03153-50020	20	50	75	M20	64	20	10	88	50	1,510	03153-950020
03153-50025	25	50	75	M20	69	20	10	88	50	1,590	03153-950025
03153-50040	40	50	75	M20	84	20	10	88	50	1,790	03153-950040
03153-50050	50	50	75	M20	94	20	10	88	50	1,990	03153-950050