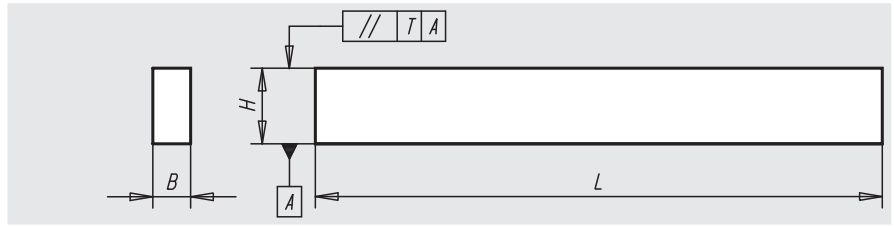


Assortment of parallel blocks



Material:
Steel

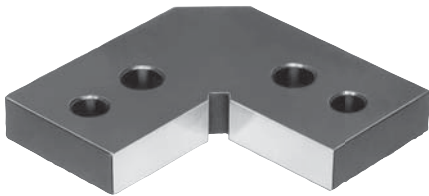
Surface finish:
Case-hardened and ground;
paired to the nearest 0,004 mm with a height tolerance
of $\pm 0,004$ mm; B and L dimension tolerances to DIN ISO
2768-m

Sample order:
nlm 03212-01

Note:
The assortment of parallel blocks is supplied in a
wooden box with a folding cover.

Order No.	Content: 1 pair of each H x B x L H pair tolerance T	H nominal size tolerance	Approx. weight kg
03212-01	14 x 10 x 150 16 x 10 x 150 18 x 10 x 150 20 x 10 x 150 22 x 10 x 150 24 x 10 x 150 26 x 10 x 150 28 x 10 x 150 30 x 10 x 150 32 x 10 x 150 35 x 10 x 150 40 x 10 x 150 45 x 10 x 150 50 x 10 x 150	0,004	$\pm 0,004$ 11,4

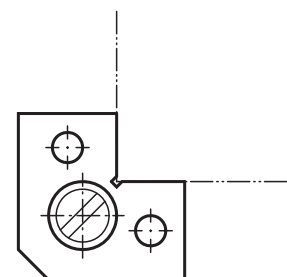
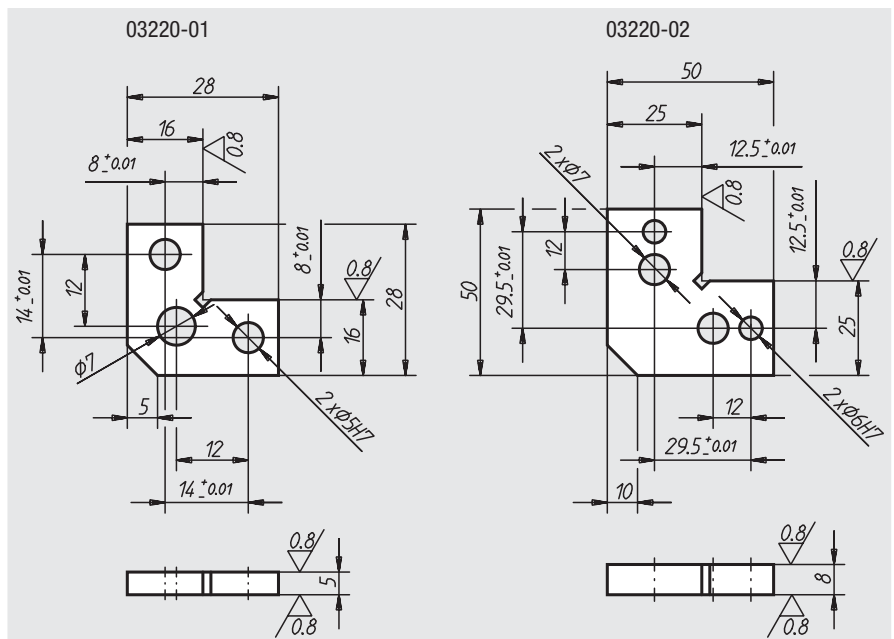
Positioning brackets



Material:
Tempered steel 1.7225

Surface finish:
Ground and treated to offer 1400 N/mm² resistance

Sample order:
nlm 03220-02



Order No.	Approx. weight kg
03220-01	0,020
03220-02	0,100

01000
02000
03000
04000
05000
06000
07000
08000
09000
20000
21000
22000
23000