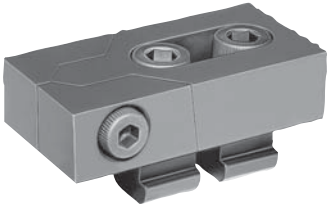


# Edge clamps

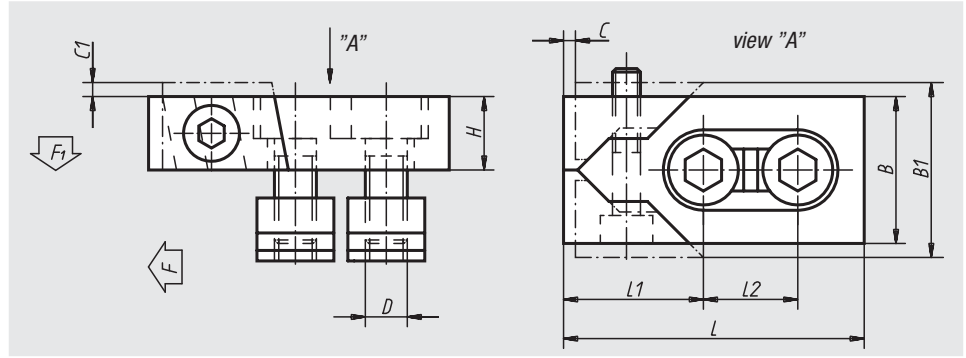


**Material:**  
Steel

**Surface finish:**  
Hardened and black oxid finish

**Sample order:**  
nlm 04450-16

**Note:**  
Due to their flat construction, these handy edge clamps are suitable for machining the majority of part dimensions that occur. These hardened jaws clamp forward and downward simultaneously due to the wedging effect.



Order No.	Slot width	L	L1	L2	B	B1	H	C	C1	D	F	F1	Tightening torque max. Nm	Approx. weight kg
04450-12	12	80	39	26	40	47	20	3	2,5	M10	16	0,6	15	1,150
04450-14	14	80	39	26	40	47	20	3	2,5	M12	22	0,9	18	1,250
04450-16	16	80	39	26	40	47	20	3	3	M12	22	0,9	18	1,330
04450-161	16	100	46	34	50	59	25	4	2,5	M14	32	1,2	25	2,340
04450-18	18	100	46	34	50	60	25	4	3	M16	36	1,4	35	2,540
04450-20	20	100	46	34	50	60	25	4	3	M16	36	1,4	35	2,660
04450-22	22	140	65	50	78	95	30	5	4	M20	36	1,4	45	5,980

# Pressing clamps



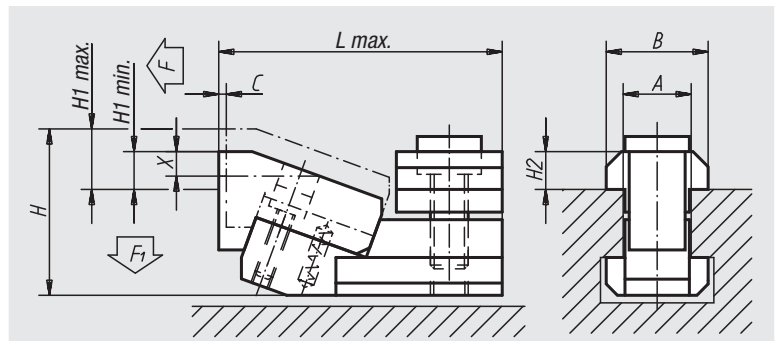
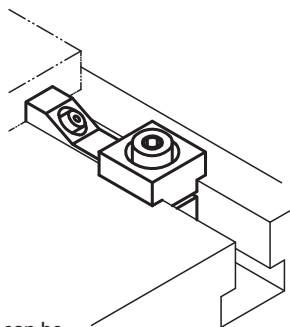
**Material:**  
Steel

**Surface finish:**  
Hardened and black oxid finish

**Sample order:**  
nlm 04470-12

**Note:**  
Particularly low parts to be machined can be clamped using these flat clamps. The part to be machined is pressed firmly and securely into the machine-tool table by the wedging effect of the jaws.  
„H1“ and „X“ at the maximum t-slot depth specified by DIN 650.  
The spanner can be ground down by the dimension X to achieve lower clamping levels.

application example:



Order No.	A	C	L max.	B	H	H1 min.	H1 max.	X	H2	F (N)	F1 (N)	Approx. weight kg
04470-12	12	1,8	52	18	31	3,5	8,5	5	7	5000	600	0,300
04470-14	14	1,8	55	22	34	2,5	7,5	5	8	5500	700	0,380
04470-16	16	2,5	68	25	41	4	11	6	9	8000	900	0,700
04470-18	18	2,5	71	28	43	2	9	6	10	9000	1000	0,830
04470-22	22	3	89	35	53	5	14	9	14	16000	1900	1,740

01000  
02000  
03000  
04000  
05000  
06000  
07000  
08000  
09000  
20000  
21000  
22000  
23000