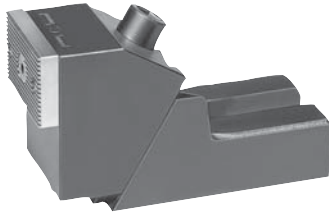


Reversible jaw edge clamps



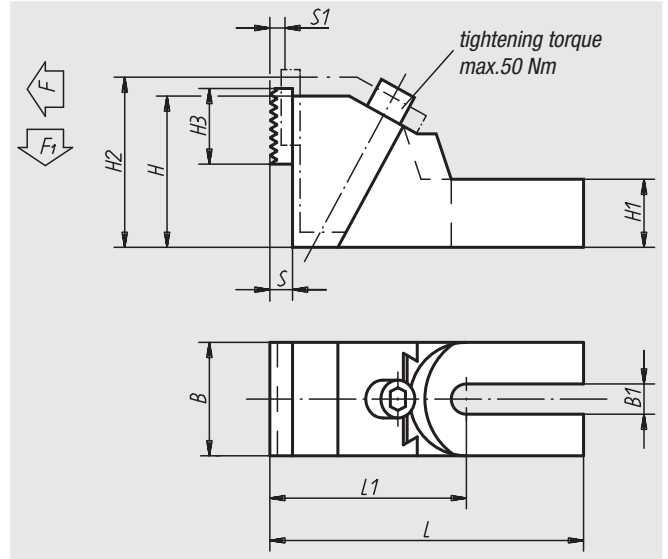
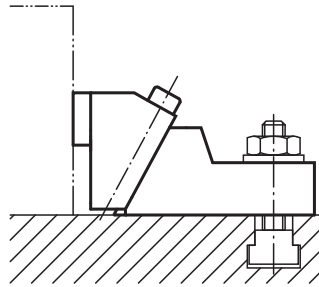
Material:
Malleable, cast iron body;
clamping jaw in case-hardened steel

Surface finish:
Black oxide finish,
clamping jaw case-hardened

Sample order:
nlm 04500-26

Note:
The jaws are rotatable: smooth side for machined parts, rippled side for rough clamping surfaces. We recommend that two clamping screws be used to clamp the stable jaw on the table of the machine tool!
Bolts for t-slots 07040 (order separately) can be used as fixing bolts dependent on the width of the slot.

application example:



Order No.	suitable for slot width	L	L1	B	B1	H	H1	H2	H3	S	S1	F kN	F1 kN	Approx. weight kg
04500-19	12, 14, 16, 18	177,5	112,5	65	19	85	37	99	40	12	8	18,8	2,26	4,400
04500-26	20, 22, 24, 28, 30	226,5	136,5	75	26	100	45	118	40	12	11	23,05	2,77	6,800
04500-38	32, 36, 42	262,5	157,5	90	38	120	55	145	40	12	15	29,4	3,33	11,300

Narrow edge clamps

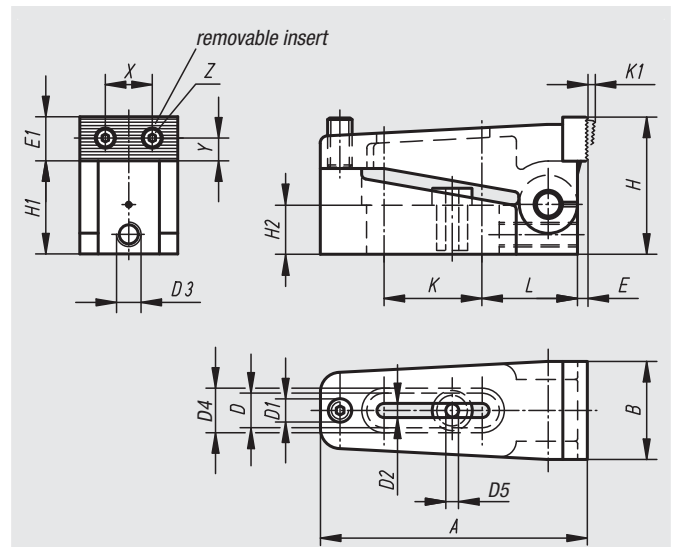


Material:
Base body in steel; clamping jaw in hardened steel;
centring bush with collar in tempered steel

Surface finish:
Black oxide finish;
clamping jaw case-hardened

Sample order:
nlm 04509-006

Note:
Because of their low design, narrow edge clamps are perfect for machining pieces with small heights. The hardened steel jaws exert forward and downward pressure on the workpiece at the same time.



Order No.	A	B	D	D1	D2	D3	D4	D5	E	E1	H	H1	H2	K	K1	L	X	Y	Z	Clamping force kN	Approx. weight kg
04509-006	73	25	12,2	M6	7	M6	16	6,5	2,5	11	35	24	12,4	25,5	2,5	27	12	4,5	M3	10	0,240
04509-010	110	39	18,2	M10	11	M10	24	10,5	4	18	56	38	20	40,5	4	39	20,5	8	M5	40	0,970
04509-016	170	58	26,2	M16	17	M10	35	17	7	27	85	60	30	60,5	7	61	32	13	M8	100	3,800