

Sliding edge clamps

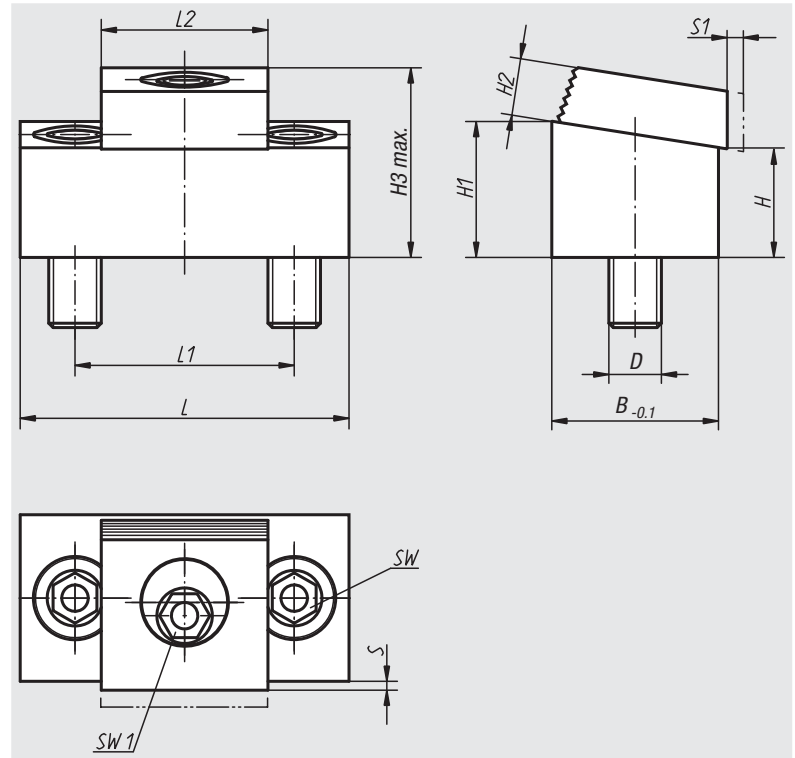


Material:
Steel

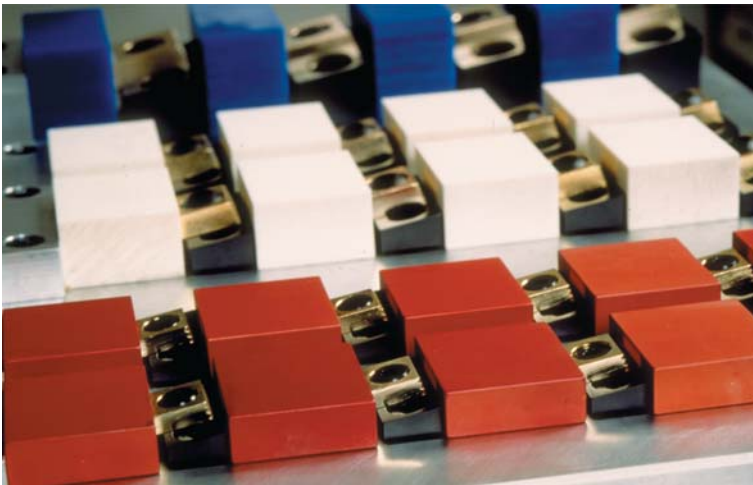
Surface finish:
Body heat-treated and black oxide finish, clamping disc case-hardened and brass-coated

Sample order:
nlm 04521-10

Note:
Sliding edge clamps allow space-saving and economical clamping of multiple workpieces.
When clamping multiple workpieces the rear side of the body can be used as a stop.
Mounting preferably in slots with $B +0.05$ mm. The contact height of the clamping disc can be varied with the depth of the slot.



Example for multiple clampings with sliding edge clamps



Order No.	L	L1	L2	B	H	H1	H2	H3 max.	S	D	S1 (Clamping travel)	SW	SW1	Clamping force kN	Tightening torque max. Nm	Approx. weight kg
04521-08	43,2	25,4	19	19	12,7	15,7	6,4	21,4	1,5	M8	1,6	5	7	8,9	28	0,100
04521-10	54	33,5	25,4	25,4	11,4	15,4	9,7	24,5	1,8	M10	2	7	8	17,8	88	0,178
04521-12	75	50,8	38	38,1	25,5	31,5	13	43	2,05	M12	2,5	10	12	26,7	135	0,720

01000
02000
03000
04000
05000
06000
07000
08000
09000
20000
21000
22000
23000