

Taper clamping units

form A+L with extra length for made-to-order forms



Material, surface finish:

Body in hardened tool steel, clamping segments in tool steel (30 HRC) with black oxide finish, taper surfaces ground; specially designed clamping ends to suit your application or other hardness values available on request

Sample order:

nIm 04526-12

Note:

The special feature of the taper clamping units „Form A+L“ lies in the added length of 3 mm per clamping jaw for version 04526-08 and 5 mm for versions 04526-12 and 04526-16. This extra length allows for forms adjusted to the workpiece geometry to be incorporated (see illustration).

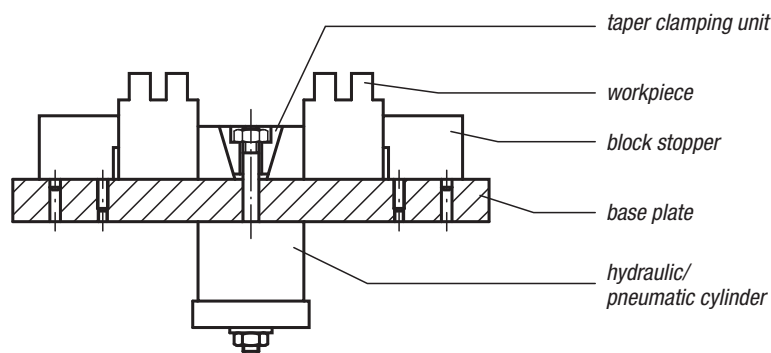
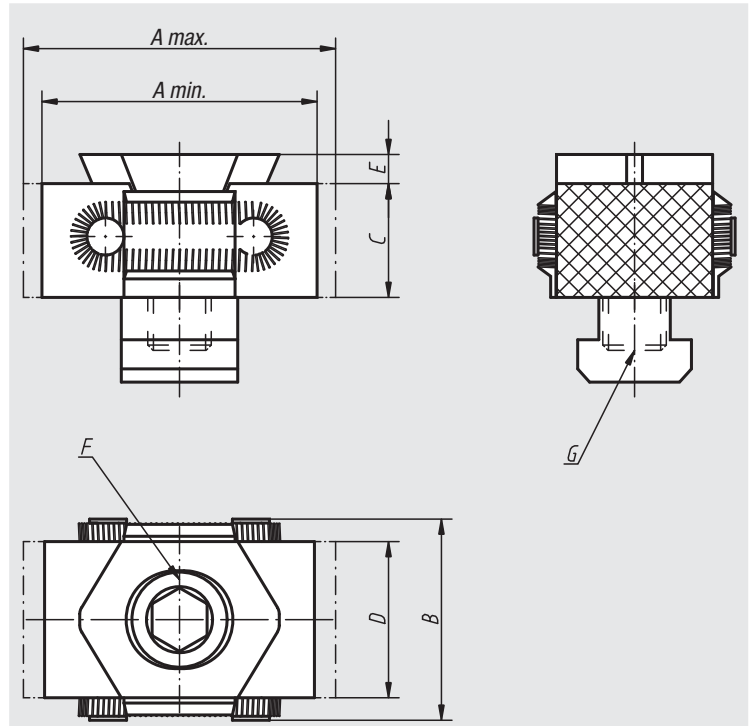
The clamping jaws with Order No. 04526-08 are not serrated.

Travel path according to Order No.:

04526-08 = ± 0.5 mm

04526-12 = ± 1.0 mm

04526-16 = ± 1.5 mm



Order No.	A min.	A max.	B	C	D	E	F Socket head screw DIN 912	G	Clamping force kN	Tightening torque Nm	Approx. weight kg
04526-08	33	37	29	15	21	2,5	M8x25	for threaded hole	15	25	0,084
04526-0810	33	37	29	15	21	2,5	M8x25	for T-slot 10	15	25	0,096
04526-12	52	59	41	22	30	4	M12x40	for threaded hole	30	85	0,276
04526-1214	52	59	41	22	30	4	M12x30	for T-slot 14	30	85	0,303
04526-16	67	76	56	29	42	5	M16x60	for threaded hole	50	210	0,668
04526-1618	67	76	56	29	42	5	M16x50	for T-slot 18	50	210	0,722