

# Mushroom knobs

with internal thread



## Material, surface finish:

Anthracite grey thermoplastic.

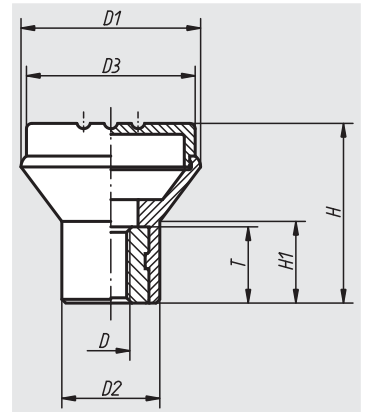
Bush in steel 5.8, blue chromated or in stainless steel 1.4305, natural finish.

## Sample order:

nIm 06241-046 (knob cap colour traffic red)

## Note:

Δ Add the desired knob cap colour here; no colour code is required with anthracite grey knob caps.



Order No. bush in steel	Order No. bush in stainless steel	Size	D	D1	D2	D3	H	H1	T	Approx. weight kg
06241-04Δ	06241-004Δ	1	M4	21	12	19	21	10	10	0,009
06241-05Δ	06241-005Δ	1	M5	21	12	19	21	10	10	0,008
06241-06Δ	06241-006Δ	2	M6	25	14	23	25	12	10	0,009
06241-08Δ	06241-008Δ	3	M8	33	19	31	33	15	14	0,022