

Cylindrical safety grips

automatically returning



Material, surface finish:

Grip anthracite grey thermoplastic.
Steel parts black oxide finish.

Sample order:

nIm 06328-104

Note:

Two steps have to be executed to bring the cylindrical safety grip into operating position:

- Swivel the grip around the axis of rotation until it stops (90°).
- Press the grip in axial direction into locking position.

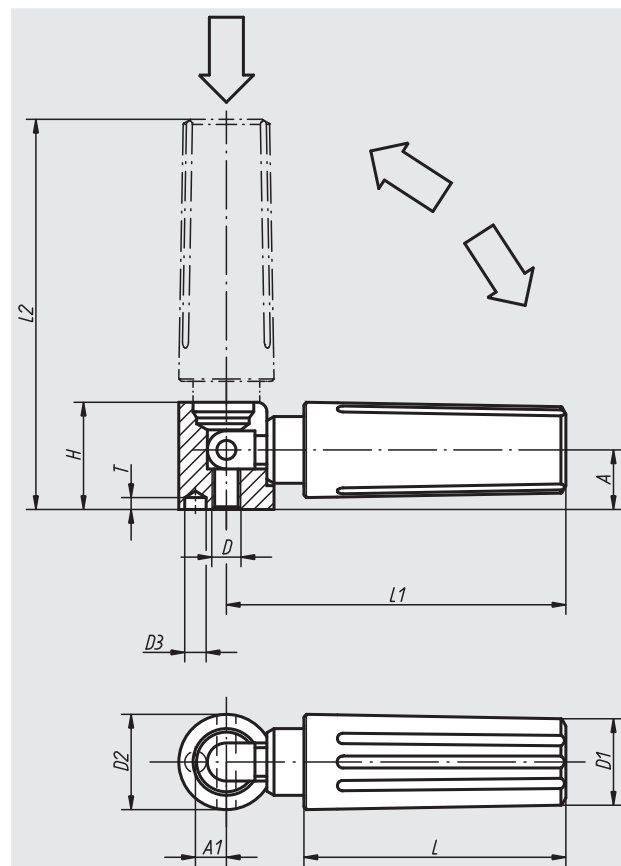
The pressed-in position is the most comfortable position to crank.

The grip returns automatically after letting go.

Cylindrical safety grips are supplied assembled and can be

screwed to handwheels, spools and cranks.

Borehole D3 is used as a positioning hole.



Order No.	Size	D	D1	D2	D3	A	A1	H	L	L1	L2	T	Approx. weight kg
06328-104	1	M4	13	13	2,5	8	4,3	14,5	35	47	52,5	4,5	0,028
06328-205	2	M5	16	16	3,5	10	5,3	18	44	58	65,5	4,5	0,051
06328-306	3	M6	20	20	4,5	12,5	6,5	22,5	55	71,5	81	6	0,101
06328-408	4	M8	25	26	5,5	16	9	29	70,5	98,5	111	6,5	0,225