

Multiple connectors



Material, surface finish:

Wing grip:

Handle in thermoplastic, anthracite grey.

Threaded bolt in blue chromated steel 5.8.

Main body in high-strength aluminium nickel silver anodized.

Sample order:

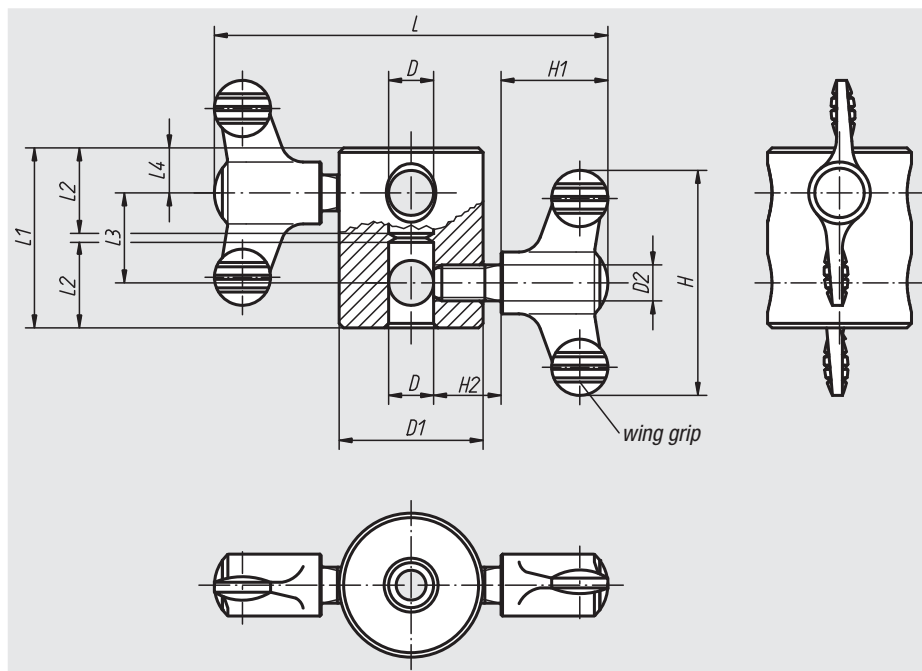
nIm 06622-04

Note:

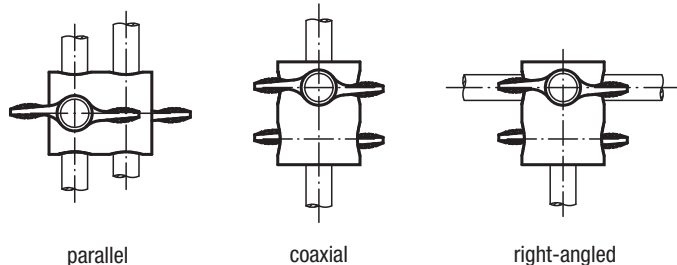
Multiple connectors are used to extend round cross sections (bars, tubes, etc.) in a coaxial or parallel arrangement.

A parallel arrangement of bars, for example, can also be used to strengthen or stiffen an assembly.

The locating hole system in the main body also makes it possible to produce right-angled connections.



Arrangement:



parallel

coaxial

right-angled

Order No.	Size	D	D1	D2	L	L1	L2	L3	L4	H	H1	H2	Approx. weight kg
06622-01	1	8	28	M8	86	36	17	20	8	50	24	15	0,074
06622-02	2	10	32	M8	88	40	19	20	10	50	24	15	0,093
06622-03	3	12	36	M8	90	44	21	20	12	50	24	15	0,118
06622-04	4	16	45	M10	127,2	56	27	24	16	75	35,6	20	0,262