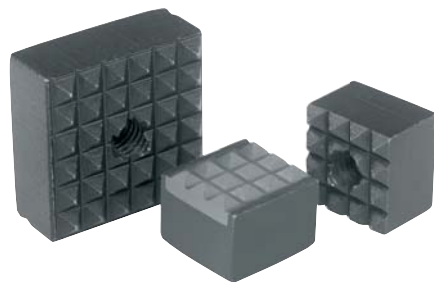


## Square grippers

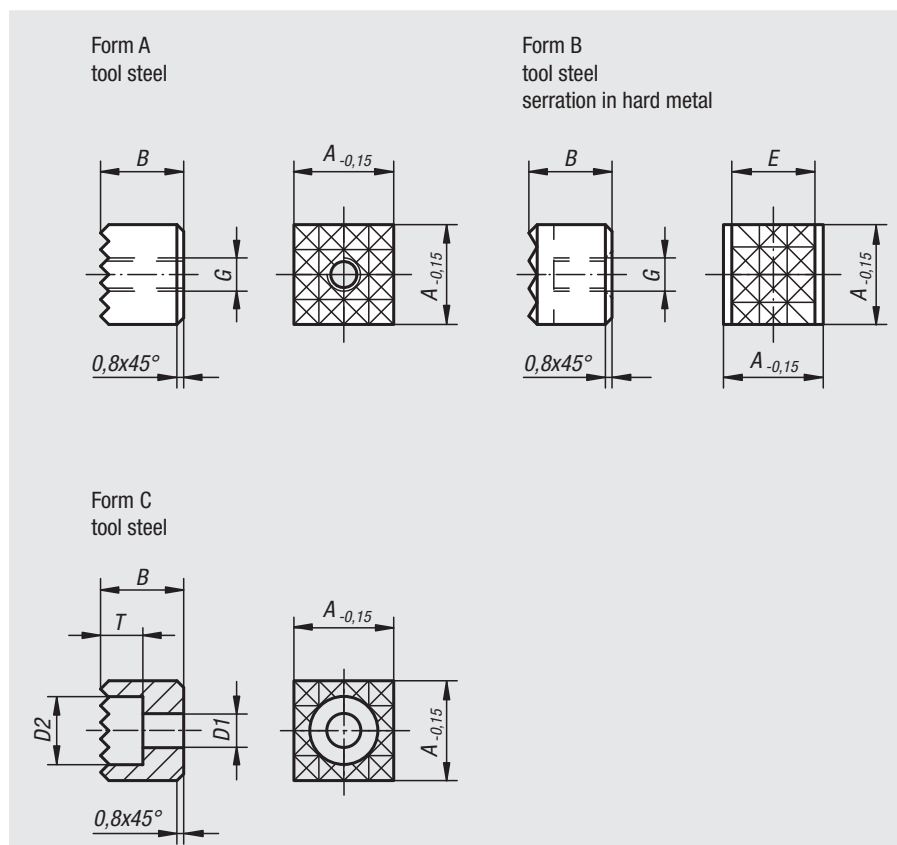


**Material:**  
Hardened tool steel resp. hard metal.

**Surface finish:**  
Black oxide finish.

**Sample order:**  
nlm 07115-2506

**Note:**  
Grippers and inserts are ideal for use in clamping arms, gripping systems, clamping fixtures, clamping jaws and toggle locators.  
Grippers transfer very high torque values, even with hard materials and surface irregularities. Grippers guarantee above average holding forces at high cutting forces.  
The serrated hard metal tips are soldered in.



Order No.	Form	A	B	D1	D2	E	G	T	Serration	Approx. weight kg
07115-1005	A	10	10	-	-	-	M5	-	superfine	0,005
07115-101205	A	10	12	-	-	-	M5	-	superfine	0,007
07115-1205	A	12	10	-	-	-	M5	-	fine	0,010
07115-121205	A	12	12	-	-	-	M5	-	fine	0,011
07115-1606	A	16	10	-	-	-	M6	-	fine	0,017
07115-161206	A	16	12	-	-	-	M6	-	fine	0,021
07115-2005	A	20	10	-	-	-	M5	-	fine	0,025
07115-201205	A	20	12	-	-	-	M5	-	fine	0,034
07115-2506	A	25	10	-	-	-	M6	-	fine	0,045
07115-251206	A	25	12	-	-	-	M6	-	fine	0,053
07115-12057	B	12	10	-	-	10,3	M5	-	fine	0,010
07115-1210048	C	12	10	4,5	9	-	-	5,6	fine	0,008
07115-1212048	C	12	12	4,5	9	-	-	5,6	fine	0,010
07115-1610048	C	16	10	4,5	9	-	-	5,6	fine	0,016
07115-1612048	C	16	12	4,5	9	-	-	5,6	fine	0,020
07115-2010058	C	20	10	5,5	10	-	-	6,6	fine	0,025
07115-2012058	C	20	12	5,5	10	-	-	6,6	fine	0,030
07115-2510068	C	25	10	6,6	11	-	-	7,6	fine	0,040
07115-2512068	C	25	12	6,6	11	-	-	7,6	fine	0,049