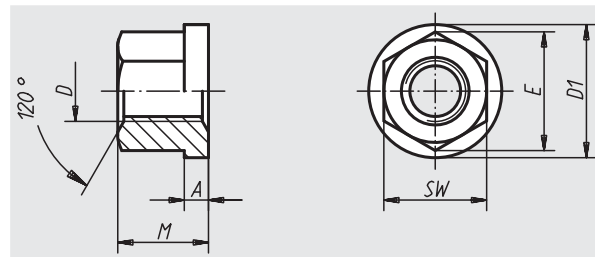


# Hexagon nuts with collar

height 1.5 D, to DIN 6331 extended



### Material:

Tempered steel or stainless steel (A2).

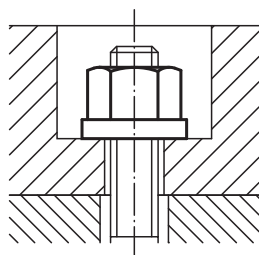
### Surface finish:

Steel class 10, black.

Stainless steel A 2-70, natural finish.

### Sample order:

nIm 07240-16



Order No.	Material	D	M = 1,5 x D	A	D1	SW	E	Approx. weight g
07240-05	steel	M5	7,5	2	12	9	10,4	3
07240-06	steel	M6	9	3	14	10	11,5	6
07240-08	steel	M8	12	3,5	18	13	15	12
07240-10	steel	M10	15	4	22	16	18,5	22
07240-101	steel	M10	15	4	22	17	19,6	25
07240-12	steel	M12	18	4	25	18	20,8	31
07240-121	steel	M12	18	4	25	19	21,9	35
07240-14	steel	M14	21	4,5	28	22	25,4	51
07240-16	steel	M16	24	5	31	24	27,7	70
07240-18	steel	M18	27	5	34	27	31,2	95
07240-20	steel	M20	30	6	37	30	34,6	130
07240-22	steel	M22	33	6	40	34	36,9	160
07240-24	steel	M24	36	6	45	36	41,6	230
07240-30	steel	M30	45	8	58	46	53,1	470
07240-36	steel	M36	54	10	68	55	63,5	810
07240-806	stainless steel	M6	9	3	14	10	11,5	6
07240-808	stainless steel	M8	12	3,5	18	13	15	12
07240-810	stainless steel	M10	15	4	22	16	18,5	22
07240-811	stainless steel	M10	15	4	22	17	19,6	25
07240-812	stainless steel	M12	18	4	25	18	20,8	31
07240-8121	stainless steel	M12	18	4	25	19	21,9	35
07240-816	stainless steel	M16	24	5	31	24	27,7	70
07240-820	stainless steel	M20	30	6	37	30	34,6	130