

Hexagon domed cap nuts

similar to DIN 1587


Material:

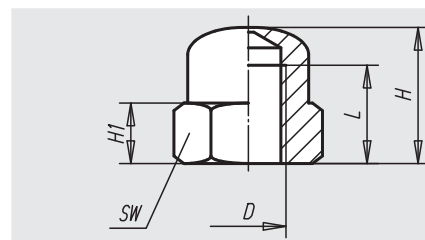
Steel

Surface finish:

Steel class 8, black oxide finish

Sample order:

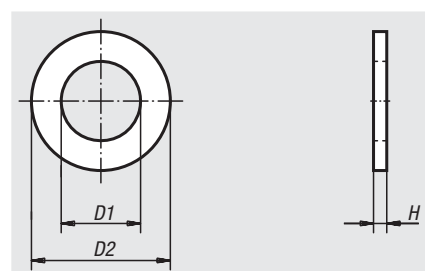
nIm 07280-10



Order No.	D	H	H1	L	SW	Approx. weight g
07280-05	M5	10	4	6,5	9	4
07280-06	M6	12	5	8	10	5
07280-08	M8	15	6,5	11	13	12
07280-10	M10	18	8	13	17	20
07280-12	M12	22	10	16	19	28
07280-14	M14	25	11	18	22	57
07280-16	M16	28	13	21	24	70
07280-20	M20	34	16	26	30	95

Medium washers

DIN 125 form A


Material:

Steel 140 HV or stainless steel (A 2-70)

Surface finish:

Natural finish

Sample order:

nIm 07300-10

Order No. steel	Order No. stainless steel	for bolt	D1	D2	H
07300-03	07300-103	M3	3,2	7	0,5
07300-04	07300-104	M4	4,3	9	0,8
07300-05	07300-105	M5	5,3	10	1
07300-06	07300-106	M6	6,4	12	1,6
07300-08	07300-108	M8	8,4	16	1,6
07300-10	07300-110	M10	10,5	20	2
07300-12	07300-112	M12	13	24	2,5
07300-14	07300-114	M14	15	28	2,5
07300-16	07300-116	M16	17	30	3
07300-20	07300-120	M20	21	37	3
07300-24	07300-124	M24	25	44	4
07300-30	07300-130	M30	31	56	4
07300-36	07300-136	M36	37	66	5

