

# Lifting eye bolts



**Material:**

Tempered steel

**Surface finish:**

Black oxide finish

**Sample order:**

nIm 07730-10

**Note:**

Each Lifting Eye Bolt undergoes visual inspection after load testing (safety factor 5).

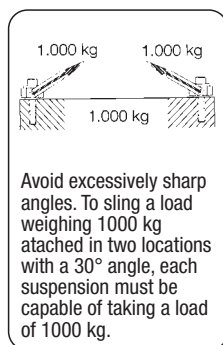
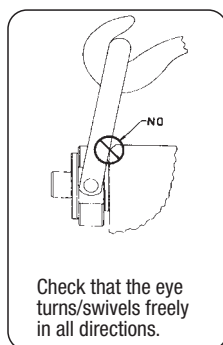
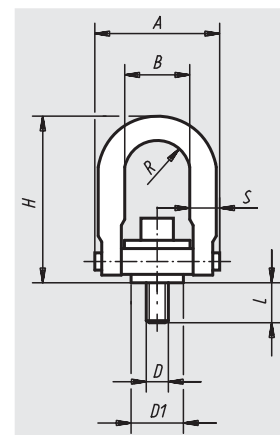
Each Lifting Eye Bolt is supplied with a technical safety data sheet for installation.

Do not use spacer washers between the bushing flange and support surface.

Fasten the screws to the stated torque. Check and tighten the screws regularly. After assembly, check if the clevis turns freely in all directions.

Lift with care! Avoid impacts!

In no event must the permissible load stamped on the Lifting Eye Bolt be exceeded.



Order No.	Surface finish	D	D1	A	B	H	L	R	S	max. permissible load kg	Tightening torque Nm	Approx. weight kg
07730-08	standard	M8	19	46,7	22	67,8	12,5	10,9	9,7	400	9,81	0,153
07730-10	standard	M10	19	46,7	22	67,8	17,5	10,9	9,7	450	16,7	0,162
07730-12	standard	M12	38,1	89,4	46	123	19	22,4	19	1050	37,3	1,057
07730-16	standard	M16	38,1	89,4	46	123	29	22,4	19	1900	80,4	1,103
07730-201	standard	M20	38,1	89,4	46	123	34	22,4	19	2150	133	3,112
07730-20	standard	M20	58,7	130,6	70	163	32	35,6	25,4	3000	133	3,112
07730-24	standard	M24	58,7	130,6	70	163	37	35,6	25,4	4200	304	3,203
07730-30	standard	M30	81	165,1	90	221,7	46	44,5	31,7	7000	588	6,300
07730-36	standard	M36	106,4	217,2	115	316,7	68	57,2	44,4	11000	981	15,500
07730-42	standard	M42	106,4	217,2	115	316,7	68	57,2	44,4	12500	981	16,000
07730-48	standard	M48	106,4	217,2	115	316,7	88	57,2	44,4	13500	981	16,800
07730-112	long	M12	38,1	89,4	46	170,7	19	22,4	19	1050	37,3	-
07730-116	long	M16	38,1	89,4	46	170,7	29	22,4	19	1900	80,4	-
07730-1201	long	M20	38,1	89,4	46	170,7	34	22,4	19	2150	133	-
07730-120	long	M20	58,7	130,6	70	206	32	35,6	25,4	3000	133	-
07730-124	long	M24	58,7	130,6	70	206	37	35,6	25,4	4200	304	-