

Pivoting lift rings

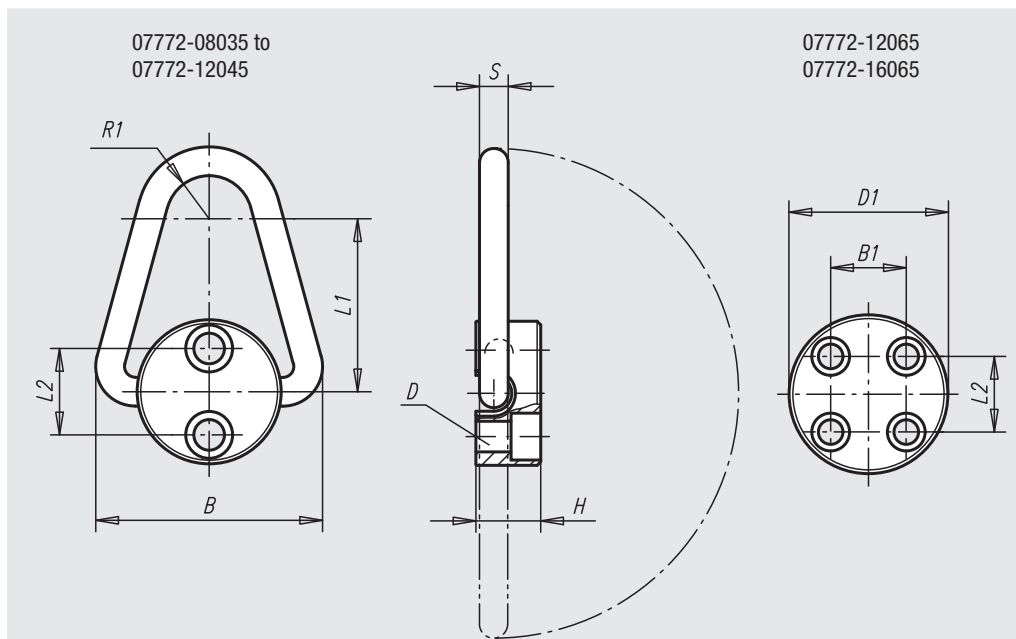


Material:
Body in tempered steel; eye in steel

Surface finish:
Black oxide finish; eye hardened

Sample order:
nlm 07772-08035

Note:
Each pivoting lift ring undergoes visual inspection after load testing (safety factor 6). Each pivoting lift ring is supplied with a technical safety data sheet for installation. Do not use spacer washers between the bushing flange and support surface. Fasten the screws to the stated torque. Check and tighten the screws regularly. After assembly, check if the clevis turns freely in all directions. Lift with care! Avoid impacts! In no event must the permissible load stamped on the pivoting lift ring be exceeded.



Order No.	D for screw DIN 912	D1	B	B1	H	L1	L2	R1	S	Tightening torque Nm	max. permissible load kg	Approx. weight kg
07772-08035	M8 x 35 (2x)	45	65	-	19	51	25,4	13	8	10	900	0,300
07772-10040	M10 x 40 (2x)	57	81	-	22	64	28,6	16	10	15	1100	0,600
07772-12045	M12 x 45 (2x)	64	100	-	29	76	38,1	19	13	35	2250	0,900
07772-12065	M12 x 65 (4x)	80	130	31,8	35	102	41,3	22	19	45	5400	1,900
07772-16065	M16 x 65 (4x)	92	160	31,8	48	127	52,4	25,4	25,4	100	9000	4,100