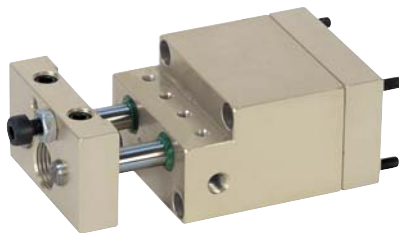


# Inclined position

for rotary module 20060-024



**Material:**  
Housing in high-strength aluminium

**Surface finish:**  
Housing anodized

**Sample order:**  
nlm 20080-014

**Note:**  
Maintenance-free pneumatic inclined position.

For implementation of a third position with Rotary Module 20060-024.

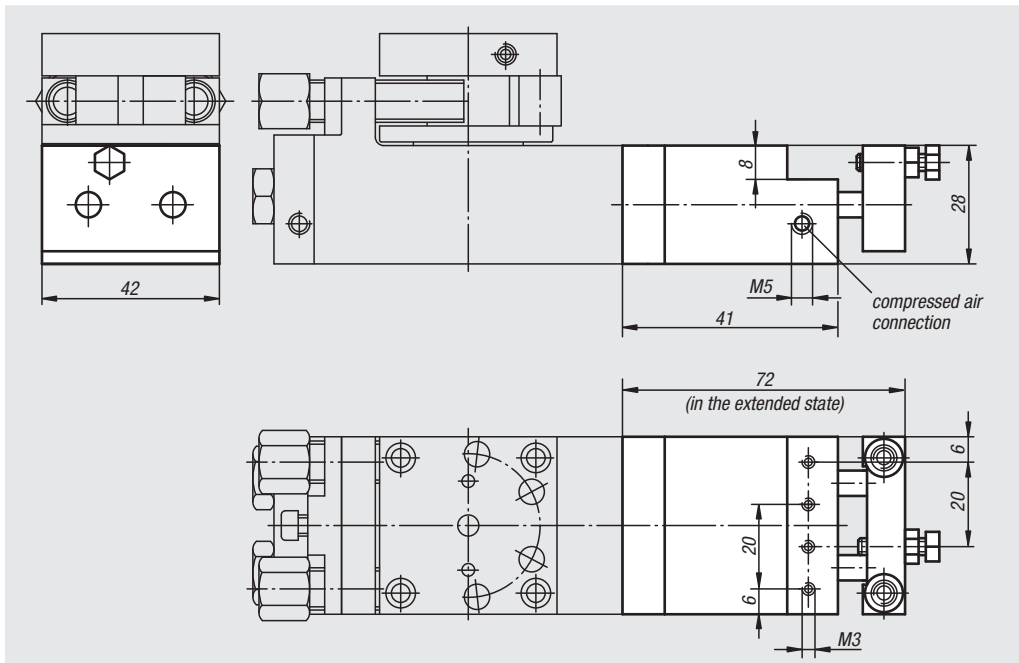
Control by 3/2 directional valve. Drive ensues via compressed air, 4-8 bar, constant, filtered (10 µm), dried, oiled or unoled. Compressed air connection M5.

Adjustment range ±20° based on 90°.

Repeat accuracy ±0.01°.

Proximity switch, connector cable and exhaust throttle are included in delivery.

**Accessory:**  
Shock absorber.



Order No.	Size	Driving torque Nm	Cylinder-Ø	Air consumption per cycle at 6 bar (ccm)	Approx. weight kg	Suitable shock absorber
20080-014	4	0,8	2 x 16	4	0,180	26300-1210010

01000  
02000  
03000  
04000  
05000  
06000  
07000  
08000  
09000  
20000  
21000  
22000  
23000