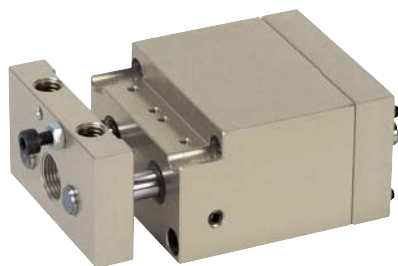


Inclined position

for rotary module 20062-016



Material:

Housing in high-strength aluminium

Surface finish:

Housing anodized

Sample order:

nIm 20082-016

Note:

Maintenance-free pneumatic inclined position.

For implementation of a third position with Rotary Module 20062-016.

Control by 3/2 directional valve. Drive ensues via compressed air, 4-8 bar, constant, filtered (10 µm), dried, oiled or unoled. Compressed air connection M5.

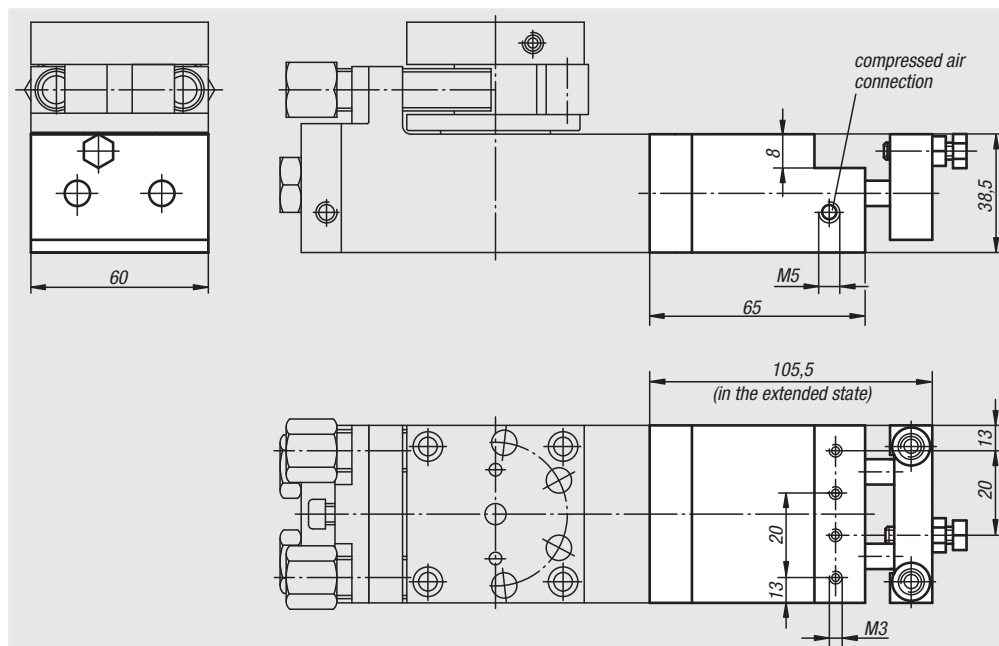
Adjustment range $\pm 20^\circ$ based on 90° .

Repeat accuracy $\pm 0.01^\circ$.

Proximity switch, connector cable and exhaust throttle are included in delivery.

Accessory:

Shock absorber.



Order No.	Size	Driving torque Nm	Cylinder- Ø	Air consumption per cycle at 6 bar (ccm)	Approx. weight kg	Suitable shock absorber
20082-016	6	3,5	2 x 25	22	0,400	26310-1410012