

Short positioning tables



Material:

Support bearing and carriage made of anodized aluminium alloy. Ground stainless steel guiding columns. Stainless steel screw with rolled thread. Guiding: smooth maintenance-free bearings

Surface finish:

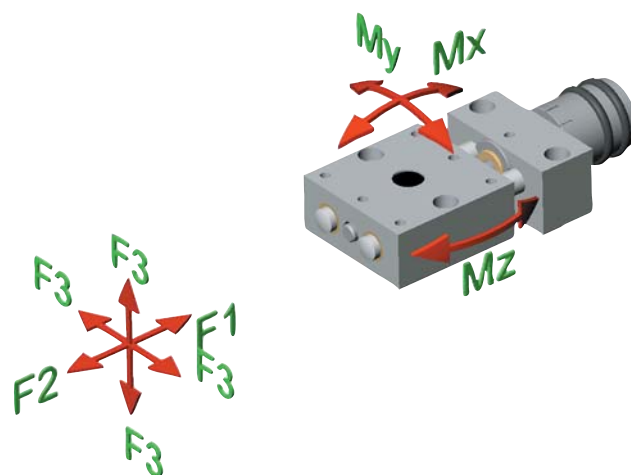
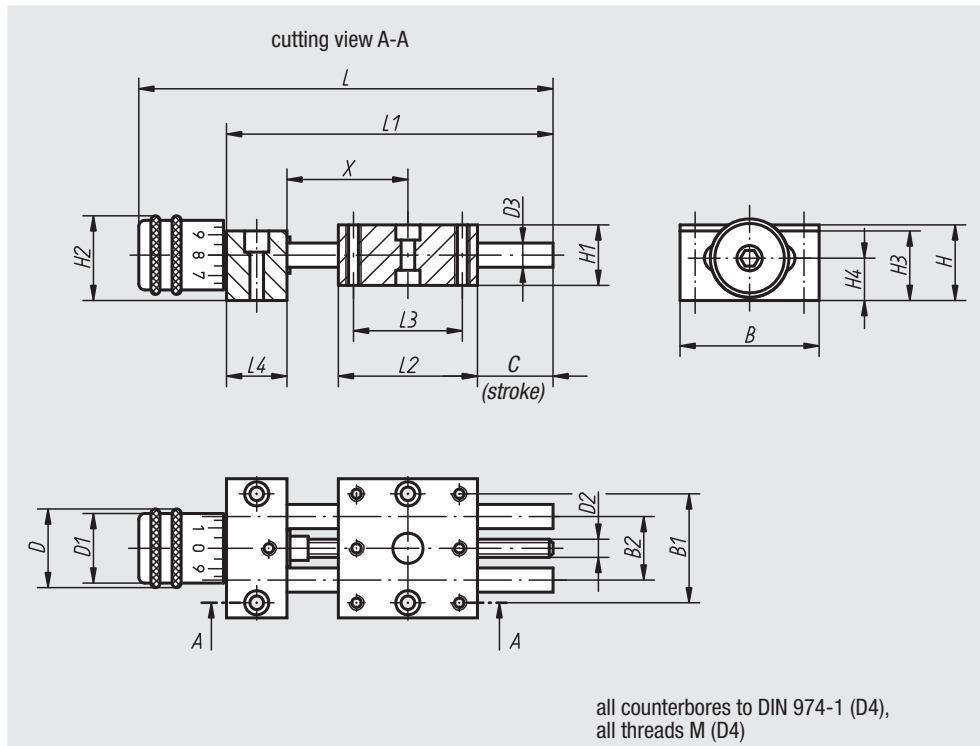
Specifications: Radial guidance play < 0.02 mm, no axial play. Self-locking screw with additional locking system.

Sample order:

n1m 21100-04

Note:

The guiding system is practically free of play and there is absolutely no play in the screw. That is why no adjustment of the screw is required. 5 or 10 graduation scale. Each graduation represents a 0.1 mm displacement. Because of its modular design, the positioning table can be easily combined with the accessories of its category.



Order No.	B	B1	B2	C	D	D1	D2	D3	D4	H	H1	H2	H3	H4	L	L1	L2	L3	L4	F1 (N)	F2 (N)	F3 (N)	Mx Nm	My Nm	Mz Nm	Approx. weight kg
21100-04	29	22	12	11	13	11,5	M3x0,5	4	3	14	12	14,5	13	8	64,5	50	29	22	10	70	70	X = 28 (10)	0,25	0,11	0,25	0,045
21100-08	46	36	21	14	26	23	M6x1	8	4	24	20	27	23	14	108,5	80	46	36	20	200	200	X = 39 (50)	1,9	0,9	1,9	0,254
21100-12	75	60	38	25	26	23	M6x1	12	6	28	25	29	27	15,5	162	133	75	60	30	300	300	X = 58 (100)	5,5	3	5,5	0,746