

Linear housing units

tandem, closed



Material:
Housing in aluminium

Surface finish:
Housing natural finish

Sample order:
nlm 21540-121002

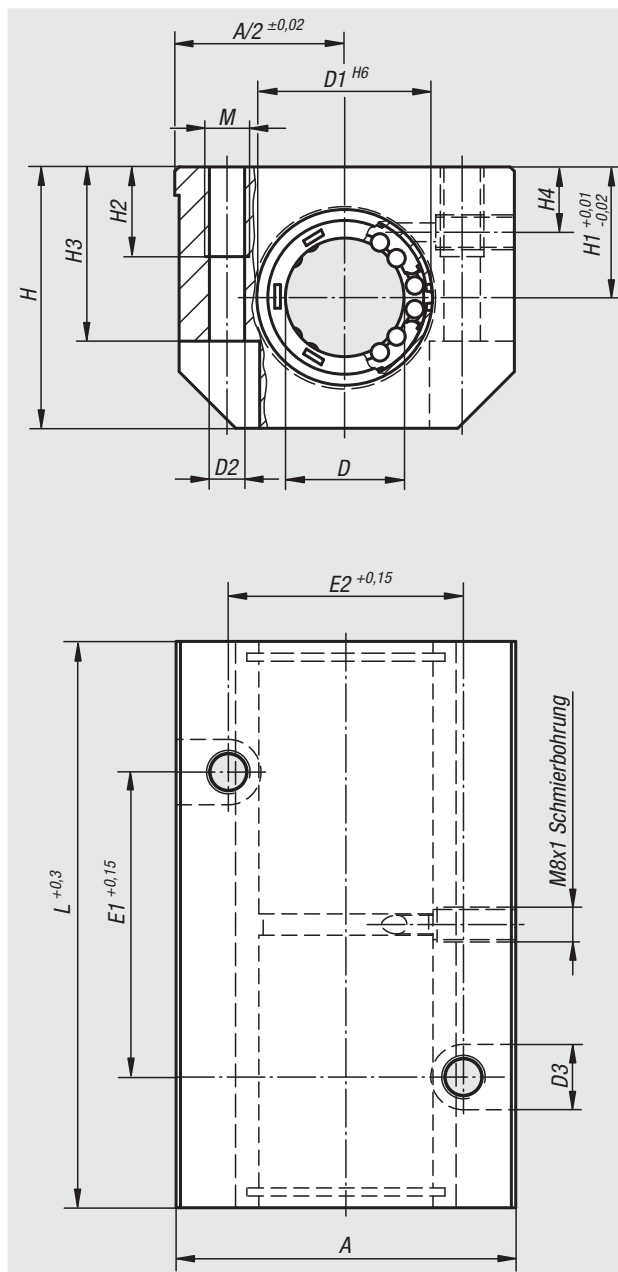
Note:
The ready-to-install linear housing units consist of an extruded aluminium housing, two installed linear ball bearings with angle error adjustment 21510 and double-sided seal. Mounting of the bearings within the housing with circlips DIN 472.

Recommended shaft tolerance: h6.

Basic load ratings according to specification of the linear ball bearings (x2).

On request:
Linear housing units can be equipped with all of the linear ball bearings presented in this catalogue.

Accessory:
Attachment seals 21560.
Precision guide shafts 21595.
Fastening screws 07160 or 07161.



Order No.	A	D	D1	D2	D3	E1	E2	H	H1	H2	H3	H4	L	M	Approx. weight kg
21540-121002	43	12	22	5,2	10	40	30	35	18	13	25	10	76	M6	0,270
21540-161002	53	16	26	5,2	10	45	36	42	22	13	30	12	84	M6	0,410
21540-201002	60	20	32	6,8	11	55	45	50	25	18	34	13	104	M8	0,720
21540-251002	78	25	40	8,6	15	70	54	60	30	22	40	15	130	M10	1,350
21540-301002	87	30	47	10,3	18	85	62	70	35	26	48	16	152	M12	2,010