

# Linear housing units

quadro, closed



**Material:**  
Housing in aluminium

**Surface finish:**  
Housing natural finish

**Sample order:**  
nlm 21550-121002

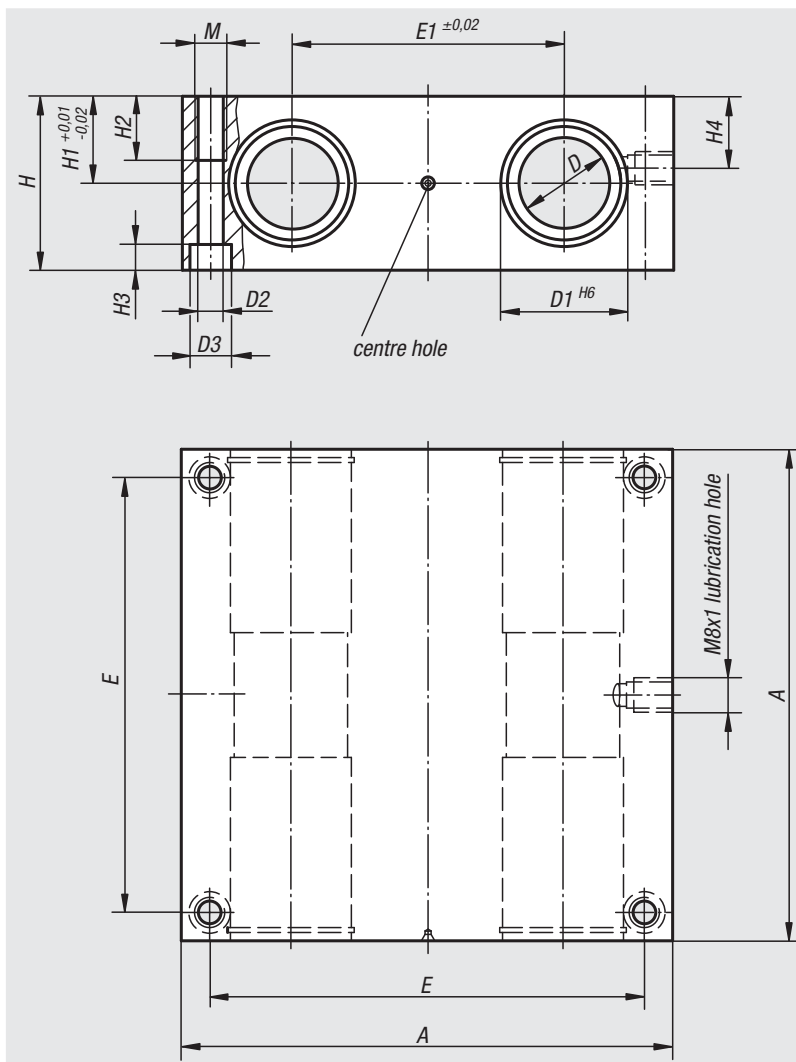
**Note:**  
The ready-to-install linear housing units consist of an extruded aluminium housing, four installed linear ball bearings with angle error adjustment 21510 and double-sided seal. Mounting of the bearings within the housing with circlips DIN 472.

Recommended shaft tolerance: h6.

Basic load ratings according to specification of the linear ball bearings (x4).

**On request:**  
Linear housing units can be equipped with all of the linear ball bearings presented in this catalogue.

**Accessory:**  
Attachment seals 21560.  
Precision guide shafts 21595.  
Fastening screws 07160 or 07161.



Order No.	A	D	D1	D2	D3	E	E1	H	H1	H2	H3	H4	M	Approx. weight kg
21550-121002	85	12	22	5,3	10	73	42	32	16	13	5,4	13	M6	0,520
21550-161002	100	16	26	5,3	10	88	54	36	18	13	5,4	15	M6	0,780
21550-201002	130	20	32	6,8	11	115	72	46	23	18	6,4	19	M8	1,740
21550-251002	160	25	40	9	15	140	88	56	28	22	8,6	24	M10	3,130
21550-301002	180	30	47	10,5	18	158	96	64	32	26	10,6	27	M12	4,430