

Shaft bents

standard

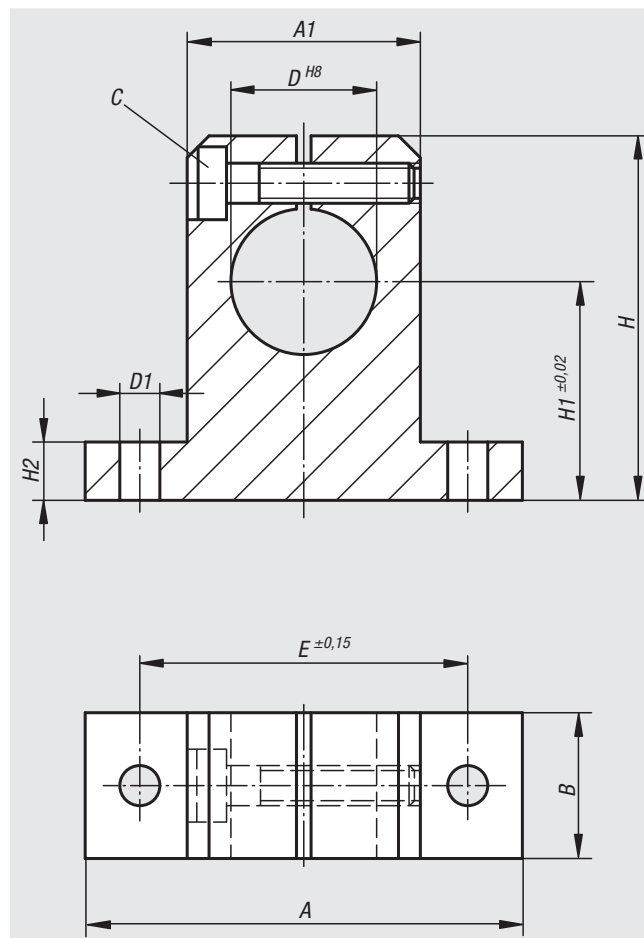


Material, surface finish:
Aluminium, natural finish

Sample order:
nlm 21582-12

Note:
Shaft bents with receiving hole for easy and secure clamping and installation of guide shafts.

Accessory:
Precision guide shafts 21595.
Fastening screws 07160 or 07161.



Order No.	A	A1	B	D	D1	E	H	H1	H2	C (DIN 912)	Approx. weight kg
21582-12	42	20	12	12	5,5	32	35	20	5,5	M4	0,020
21582-16	50	26	16	16	5,5	40	42	25	6,5	M4	0,030
21582-20	60	32	20	20	5,5	45	50	30	8	M4	0,070
21582-25	74	38	25	25	6,6	60	58	35	9	M5	0,140
21582-30	84	45	28	30	9	68	68	40	10	M6	0,200