

Cardan double joints with needle bearing

DIN 808

**Material:**

Steel

Surface finish:

Cardan shaft ground, natural finish

Sample order:

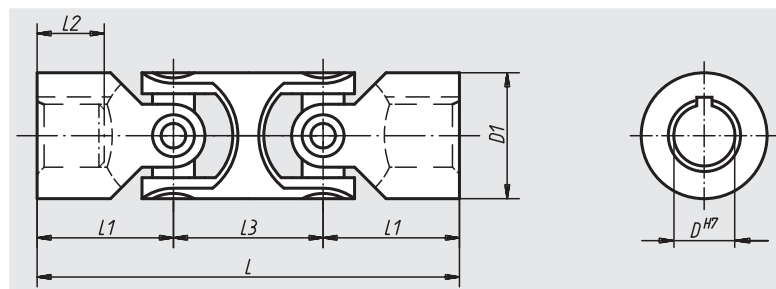
nlm 23407-12086

Note:

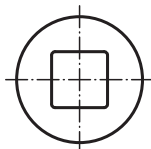
Cardan double joints with needle bearing are used for transferring speeds between 1000 r.p.m. up to 4000 r.p.m. They have a minimal clearance and are maintenance free.

Max. transferable torque (Nm) at 150 r.p.m.;
operation angle $\alpha < 5^\circ$.

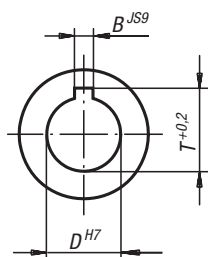
* Bore hole depth is smaller than DIN 808.

**On request:**

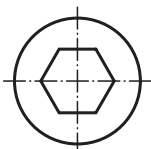
square



feather slot to DIN 6885-1



hexagon



Order No. Locating hole without slot	Order No. Locating hole with slot	D	D1	L	L1	L2	L3	B	T	Max. torque Nm	static fracture torque in Nm	Approx. weight kg
23407-10074	23407-110074	10	20	74	24	12*	26	3	11,4	10	80	0,115
23407-12086	23407-112086	12	25	86	28	14*	30	4	13,8	16	120	0,180
23407-16104	23407-116104	16	32	104	34	16*	37	5	18,3	35	250	0,335
23407-20128	23407-120128	20	40	128	41	20*	47	6	22,8	80	500	0,650
23407-25160	23407-125160	25	50	160	52	25*	56	8	28,3	130	800	1,350
23407-30238	23407-130238	30	63	238	83	38*	72	8	33,3	240	1500	4,100
23407-35212	23407-135212	35	70	212	70	35*	72	10	38,3	360	2200	4,500