

Cardan single joints with slide bearing

version coarse DIN 808



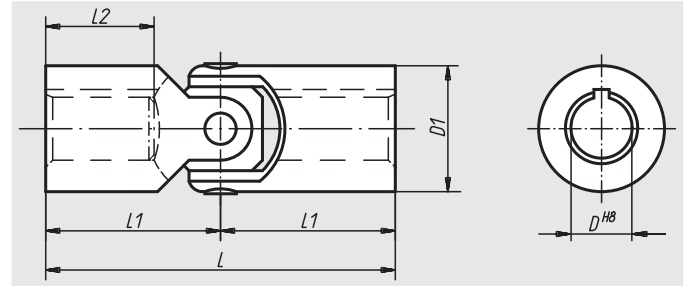
Material:
Steel

Surface finish:
Natural finish

Sample order:
nlm 23409-08042

Note:
Cardan joints (version coarse) are suitable for the manual drive of lifting tables, slides, louvres etc. resp. for short-time mechanical drives at low speed.
Cardan single joints with slide bearing can be swivelled by 35°.

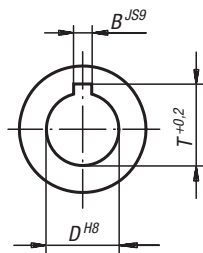
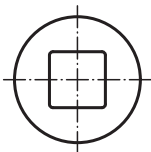
Max. transferable torque (Nm) at 150 r.p.m.;
operation angle $\alpha < 5^\circ$.



feather slot to DIN 6885-1

On request:

square



Order No. Locating hole without slot	Order No. Locating hole with slot	D	D1	L	L1	L2	B	T	Max. torque Nm	static fracture torque in Nm	Approx. weight kg
23409-08042	23409-108042	8	13	42	21	11	2	9	4	25	0,030
23409-10052	23409-110052	10	16	52	26	15	3	11,4	6	35	0,050
23409-12062	23409-112062	12	20	62	31	18	4	13,8	13	80	0,095
23409-16074	23409-116074	16	25	74	37	22	5	18,3	23	140	0,180
23409-20086	23409-120086	20	32	86	43	25	6	22,8	46	280	0,330
23409-25108	23409-125108	25	40	108	54	32	8	28,3	90	600	0,650
23409-32132	23409-132132	32	50	132	66	40	10	35,3	180	1100	1,260