

Cardan double joints with slide bearing

version coarse DIN 808



Material:

Steel

Surface finish:

Natural finish

Sample order:

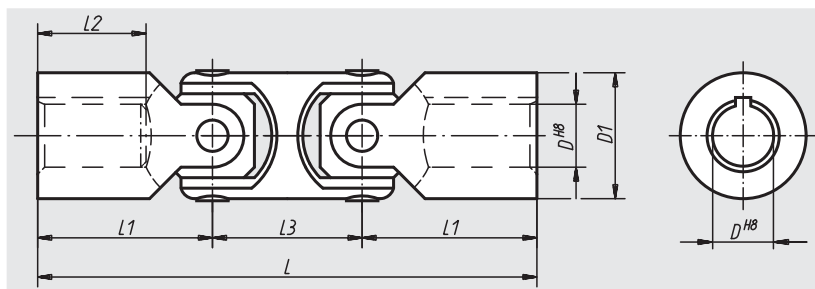
nIm 23410-10074

Note:

Cardan joints (version coarse) are suitable for the manual drive of lifting tables, slides, louvres etc. resp. for short-time mechanical drives at low speed.

Cardan double joints with slide bearing can be swivelled by 70°.

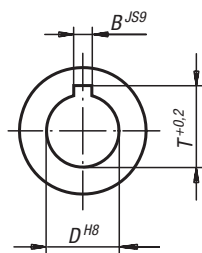
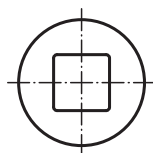
Max. transferable torque (Nm) at 150 r.p.m.;
operation angle $\alpha < 5^\circ$.



feather slot to DIN 6885-1

On request:

square



Order No. Locating hole without slot	Order No. Locating hole with slot	D	D1	L	L1	L2	L3	B	T	Max. torque Nm	static fracture torque in Nm	Approx. weight kg
23410-08060	23410-108060	8	13	60	21	11	18	2	9	4	25	0,045
23410-10074	23410-110074	10	16	74	26	15	22	3	11,4	6	35	0,075
23410-12088	23410-112088	12	20	88	31	18	26	4	13,8	13	80	0,140
23410-16104	23410-116104	16	25	104	37	22	30	5	18,3	23	140	0,260
23410-20124	23410-120124	20	32	124	43	25	37	6	22,8	46	280	0,485
23410-25156	23410-125156	25	40	156	54	32	47	8	28,3	90	600	0,950
23410-32188	23410-132188	32	50	188	66	40	56	10	35,3	180	1100	1,800