

# Strap clamps

with internal tothing, plastic



### Material, surface finish:

Black thermoplastic. Socket head screw according to DIN 7984 and hexagon nut to DIN 985 in galvanized steel

### Sample order:

nIm 29024-18

### Note:

Strap clamps with internal tothing can be combined with strap clamps with external tothing (29026) to make a joint clamp.

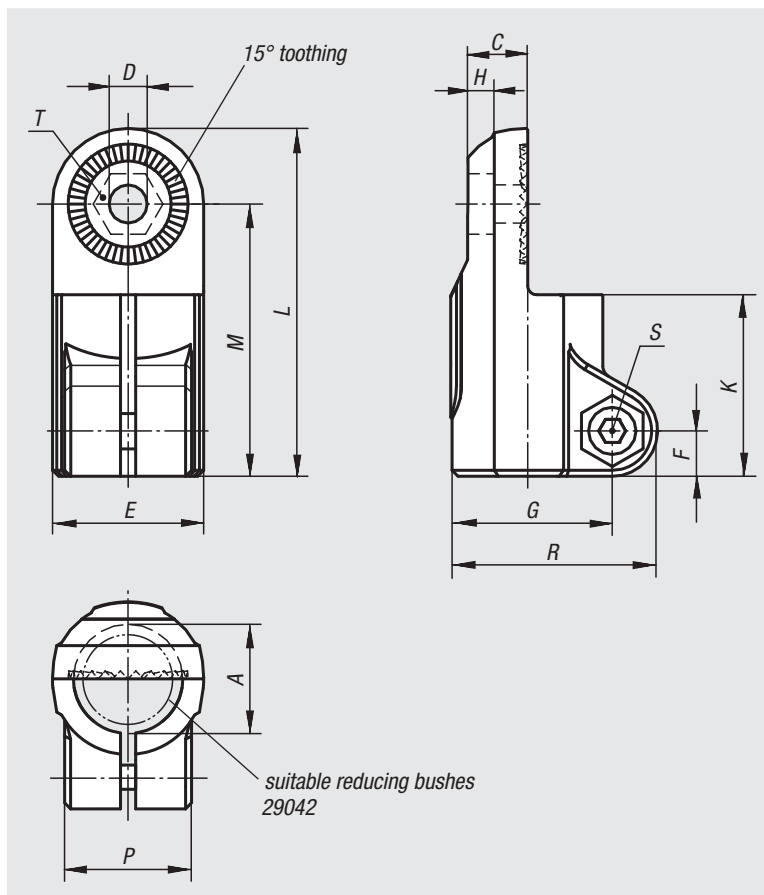
The basic size for round tubes is  $\varnothing 18$  mm or  $\varnothing 30$  mm. If smaller tubes are to be clamped or converted from round to square tubes, these can be adjusted to the required fitting by means of reducing bushes 29042.

### On request:

Clamp levers in plastic for fixing.

### Accessory:

- Reducing bushes 29042
- Round and square tubes 29050



Order No.	A	C	D	E	F	G	H	K	L	M	P	R	S	T	Approx. weight kg
29024-18	18	9,9	6,1	25	7,5	26,5	5,9	30	57,5	45	21	34	M6x18	M6-DIN 985	0,028
29024-30	30	16,5	8,1	40	11	41,5	6,5	45	88	68	28,5	52,5	M8x25	M8-DIN 985	0,086