

Strap clamps

with external tothing, plastic



Material, surface finish:

Black thermoplastic; socket head screw to DIN 7984 and hexagon nut to DIN 985 in galvanized steel

Sample order:

nIm 29026-18

Note:

Strap clamps with external tothing can be combined with strap clamps with internal tothing (29024, 29028 or 29030) to make a joint clamp.

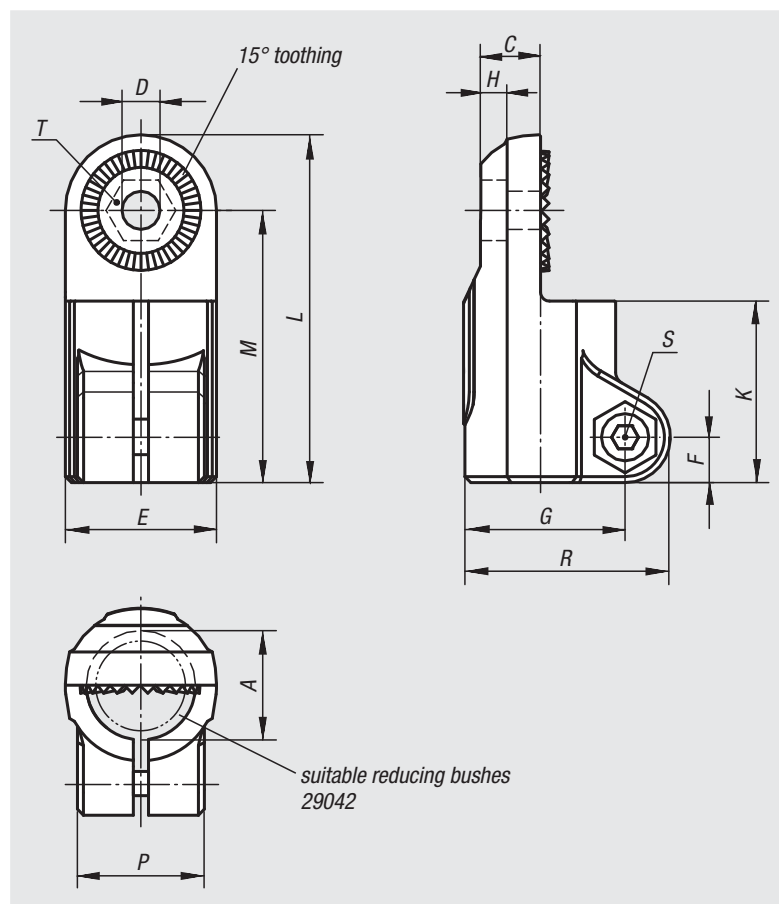
The basic size for round tubes is $\varnothing 18$ mm or $\varnothing 30$ mm. If smaller tubes are to be clamped or converted from round to square tubes, these can be adjusted to the required fitting by means of reducing bushes 29042.

On request:

Clamp levers in plastic for fixing.

Accessory:

- Reducing bushes 29042
- Round and square tubes 29050



Order No.	A	C	D	E	F	G	H	K	L	M	P	R	S	T	Approx. weight kg
29026-18	18	9,9	6,1	25	7,5	26,5	5,9	30	57,5	45	21	34	M6x18	M6-DIN 985	0,028
29026-30	30	16,5	8,1	40	11	41,5	6,5	45	88	68	28,5	52,5	M8x25	M8-DIN 985	0,087