

Clamping component set



Sample order:
nlm 33250-12

Note:

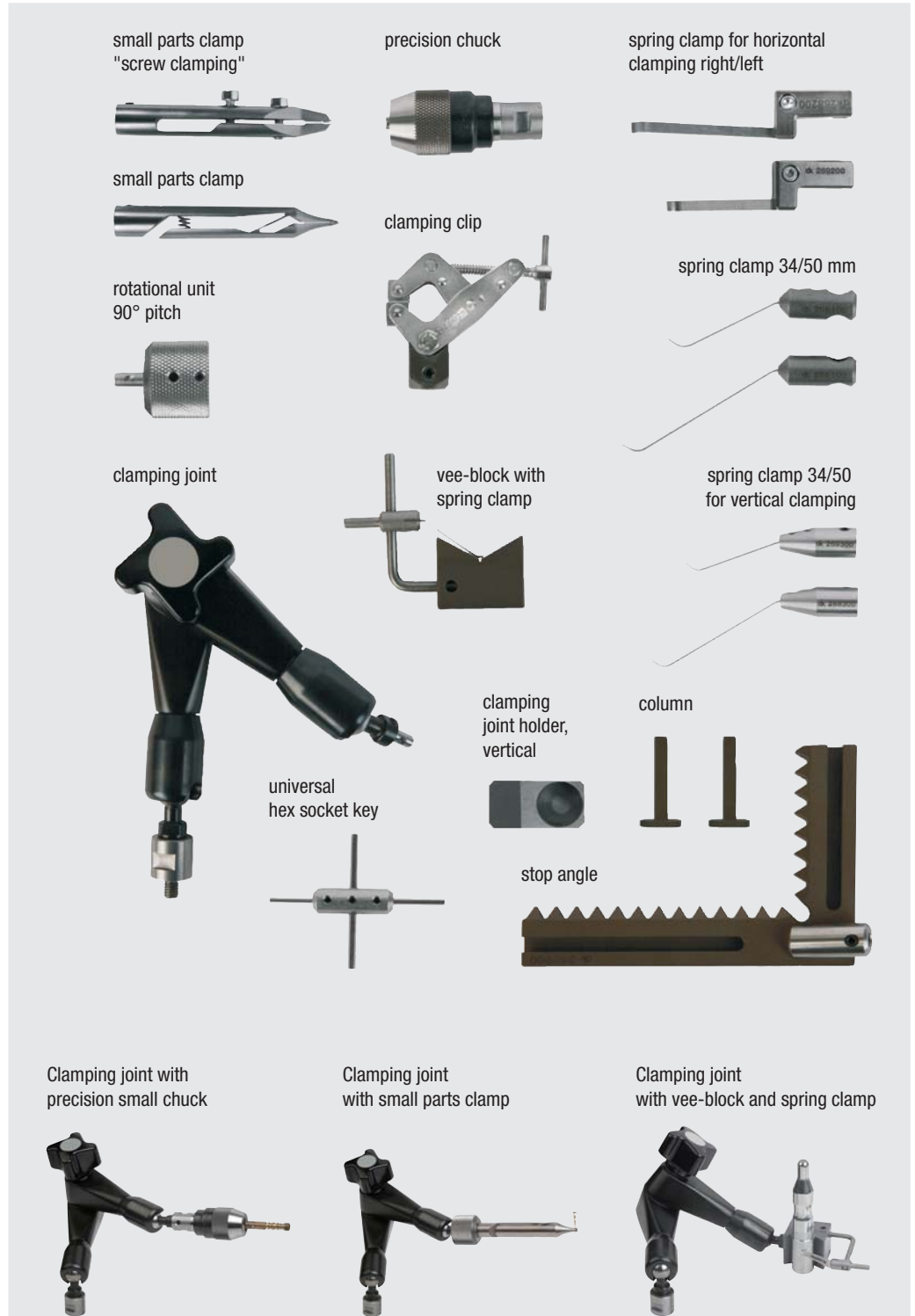
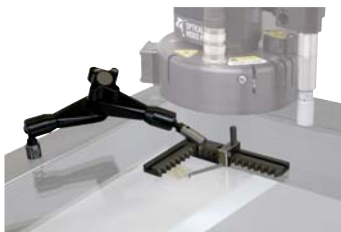
Clamping component set for measuring microscopes and optical measurement devices for fast and flexible clamping of small parts. A wide variety of work-pieces such as plastic, punched or lathe-cut parts can be precisely positioned and securely clamped. Clamping of parts, a frequent problem in measurement tasks, is thus largely solved.

The basis of the clamping system is a high-quality clamping joint that is fixed to the measuring table. Clamping elements such as chucks or clamping clips are easily mounted on the clamping joint by means of the integrated quick-change interface.

Delivered in a wooden chest.

Application:

- chuck and vee-block for fixation of rotationally symmetrical parts
- stop angle, clamping clip and small parts clamping devices for clamping sheet metal and bent parts, for example



Order No.	Surface finish	Content
33250-12	12 parts	clamping joint, stop angle, rotational unit 90° pitch, spring clamp for horizontal clamping right, spring clamp for horizontal clamping left, spring clamp 34 mm, spring clamp 50 mm, small parts clamp, vee-block with spring clamp, column, clamping clip, universal hex socket key
33250-18	18 parts	clamping joint, clamping joint holder - horizontal, stop angle, rotational unit 90° pitch, spring clamp for horizontal clamping right, spring clamp for horizontal clamping left, spring clamp 34 mm, spring clamp 50 mm, spring clamp 34 mm for vertical clamping, spring clamp 50 mm for vertical clamping, small parts clamp, small parts clamp „screw clamping“, vee-block with spring clamp, precision chuck, 2 columns, clamping clip, universal hex socket key