

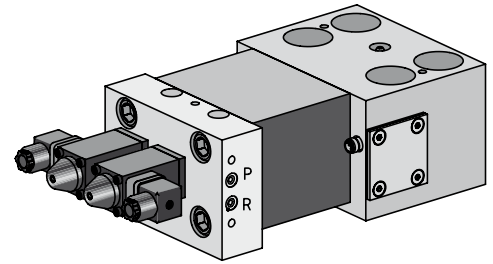


Wedge clamp with flanged single valve control

Wedge clamps with directional seat valves flanged to the rear serving as control valves for an individual activation of all clamps

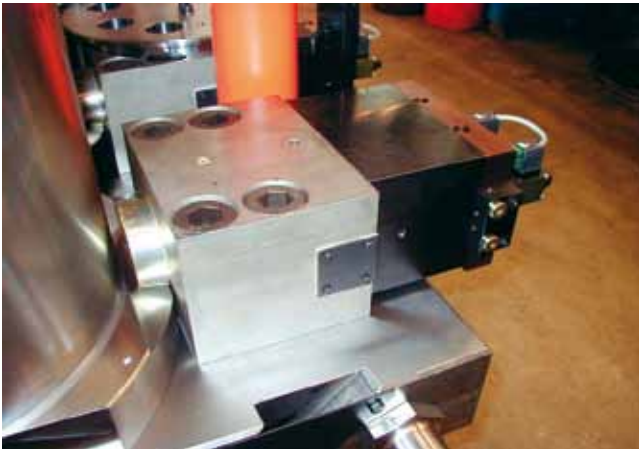
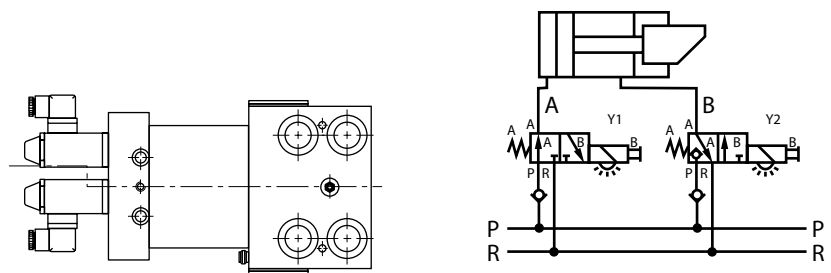
Benefits:

- Each element can be individually activated
- Single dies can be clamped
- Little installation work as a result of a plug-type closed hydraulic circuit
- Suitable for BUS systems
- High degree of operational safety thanks to integral position monitoring and check valves.
On request available with a safety step.
- Very rugged clamp with a high standard of safety and a long service life



Resistant to temperatures of up to 100°C,
120°C for 1000 working hours
Clamping force from 100 to 630 kN
Operating pressure 350 bar
Valve voltage 24 V DC

**Dimensions, interfaces
and other technical details
will be defined in the planning phase.**



5-stage drop forging press equipped with wedge clamps with directional seat valves to activate the different stages



Use of wedge clamps with sequence valve control in a forging press



Wedge clamps with flanged directional seat valves. Clamping and unclamping positions are electrically controlled. Little installation work as a result of plug-type connections between the clamps.