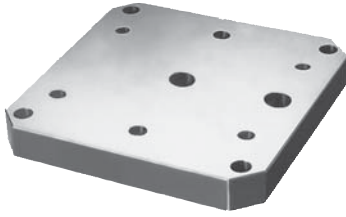


# Pallets

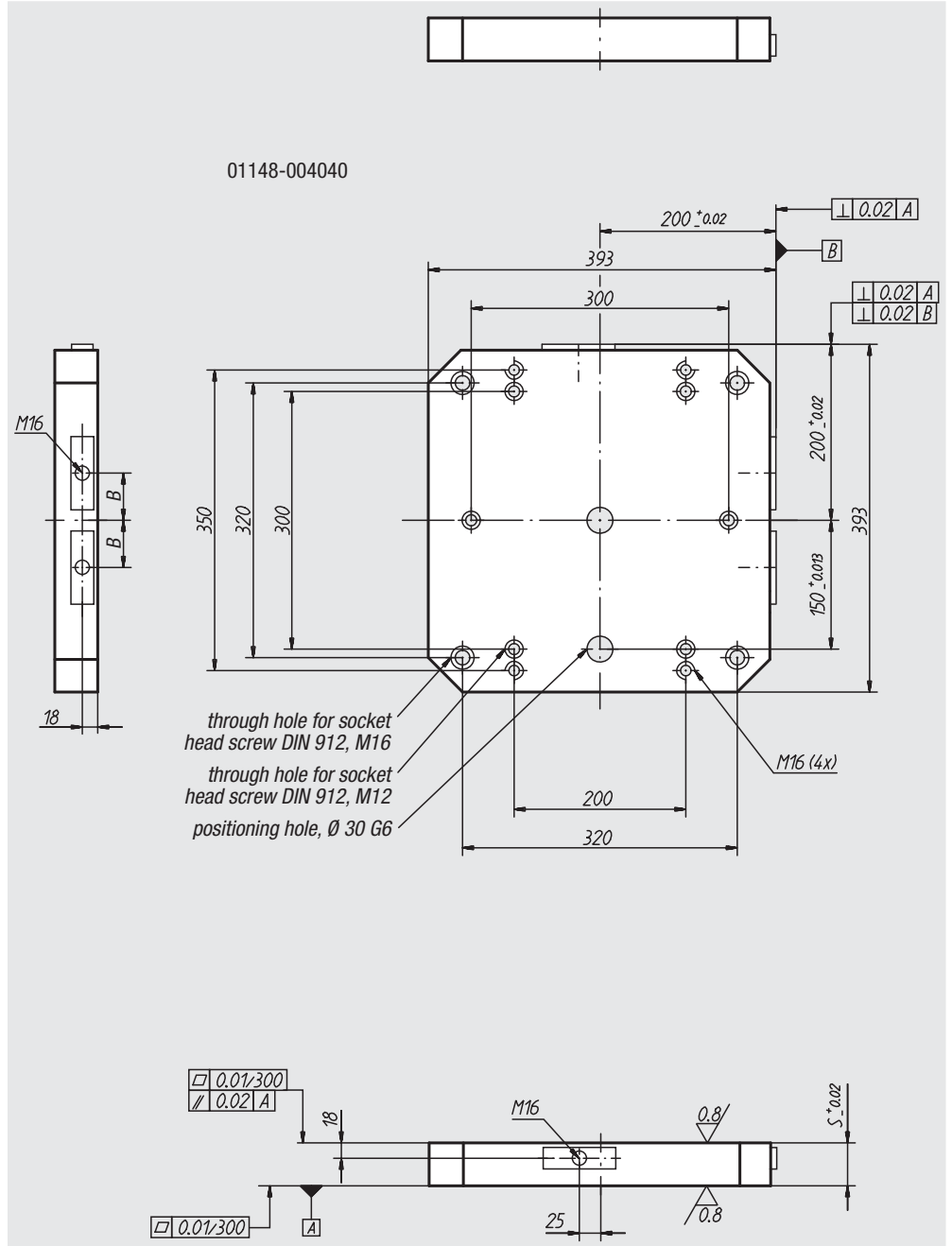


**Material:**  
Grey cast iron GJL 250

**Surface finish:**  
Mounting surfaces ground

**Sample order:**  
nlm 01148-005050

**Note:**  
The pallet positioning and attachment holes are sized to pallets for machine tools pursuant to DIN 55 201 and to pallets for machine tools pursuant to JIS 6337-1980.



Order No.	B	S	Approx. weight kg
01148-004040	55	50	58
01148-005050	75	50	90
01148-006363	100	50	140
01148-008080	135	60	260