

Compact tensioning blocks


Material:

Compact tensioning blocks: tempered steel

Surface finish:

Compact tensioning blocks: tempered

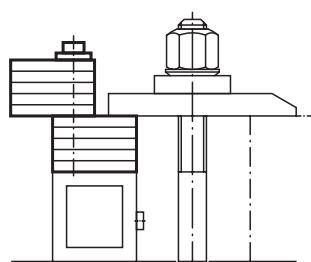
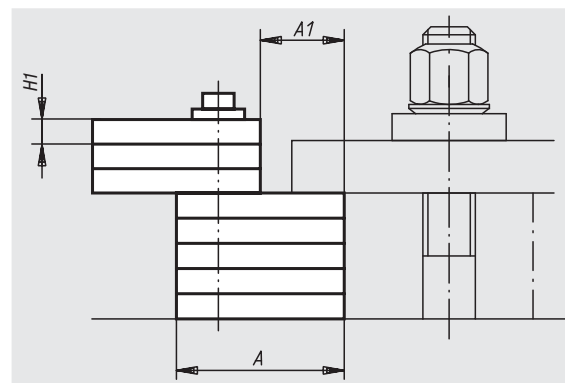
Sample order:

nIm 02240-75

Note:

Compact tensioning blocks are steel units of underlying plates, which are solidly attached to each other by an axle. The discs can be rotated individually and engage at 90°; this allows them to be used horizontally and vertically.

Every drop height required can be adjusted by a handle. All sizes can be combined.



Order No.	Surface finish	max. Clamping height	Clamp stages	H1	Base surface A x B	Clamping surface A1 x B	Approx. weight kg
02240-30	compact tensioning block	30	11	2	50x35	20x35	0,380
02240-46	compact tensioning block	46	13	3	50x35	20x35	0,600
02240-85	compact tensioning block	85	26	3	50x35	20x35	1,100
02240-50	compact tensioning block	48	11	4	60x50	26x50	1,150
02240-102	compact tensioning block	102	24	4	60x50	26x50	2,330
02240-75	compact tensioning block	77	14	5	90x80	40x80	4,000
02240-150	compact tensioning block	153	29	5	90x80	40x80	8,150
02240-35	compact tensioning block with a magnetic baseplate	35	11	2	50x35	20x35	0,400
02240-51	compact tensioning block with a magnetic baseplate	51	13	3	50x35	20x35	0,650
02240-55	compact tensioning block with a magnetic baseplate	55	11	4	60x50	26x50	1,200