

Cylindrical positioning pins ground

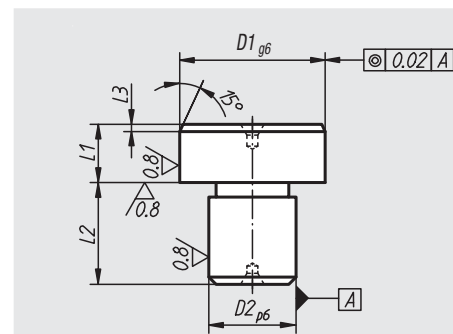
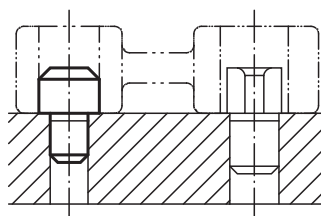


Material:
Tool steel.

Surface finish:
Hardened and ground.

Sample order:
nlm 03120-08

Note:
Face surfaces with centre hole.



Order No.	Surface finish	D1	D2	L1	L2	L3	Approx. weight kg
03120-05	D1 ground	8	5	8	8	2	0,005
03120-07	D1 ground	10	7	8	8	2	0,010
03120-08	D1 ground	12	8	8	10	2	0,012
03120-081	D1 ground	14	8	8	10	3	0,015
03120-09	D1 ground	16	9	8	12	3	0,020
03120-12	D1 ground	18	12	8	12	3	0,028
03120-121	D1 ground	20	12	8	14	3	0,034
03120-14	D1 ground	22	14	8	14	3	0,038
03120-16	D1 ground	25	16	8	16	3	0,044

Cylindrical positioning pins not ground

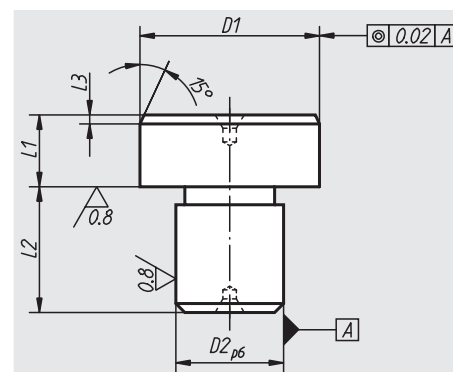
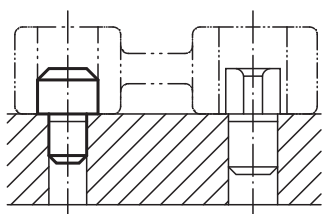


Material:
Tool steel.

Surface finish:
Hardened.

Sample order:
nlm 03130-05

Note:
Face surfaces with centre hole.



Order No.	Surface finish	D1	D2	L1	L2	L3	Approx. weight kg
03130-05	D1 not ground	8,5	5	8	8	2	0,005
03130-07	D1 not ground	10,5	7	8	8	2	0,010
03130-08	D1 not ground	12,5	8	8	10	2	0,012
03130-081	D1 not ground	14,5	8	8	10	3	0,015
03130-09	D1 not ground	16,5	9	8	12	3	0,020
03130-12	D1 not ground	18,5	12	8	12	3	0,028
03130-121	D1 not ground	20,5	12	8	14	3	0,034
03130-14	D1 not ground	22,5	14	8	14	3	0,038
03130-16	D1 not ground	25,5	16	8	16	3	0,044