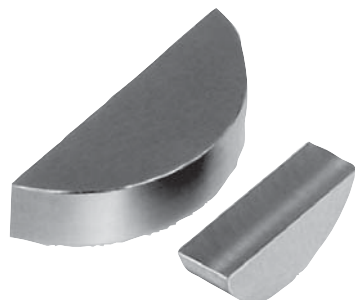


Curved washers

DIN 6888

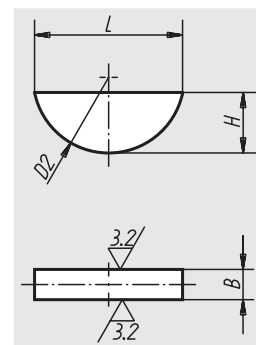


Material:
Steel 1.1192

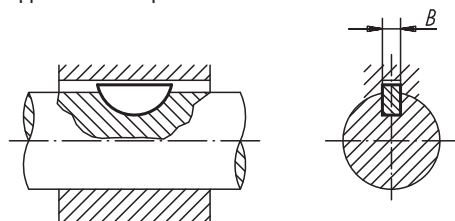
Surface finish:
Natural finish

Sample order:
nlm 03289-04X65 (Please also indicate dimension H,
e.g. 65 for H = 6,5 mm)

On request:
Curved washers in stainless steel 1.4571.



application example:



| Order No. | B | H | L | D2 |
|-------------|----|-----|------|----|
| 03289-02X5 | 2 | 5 | 12,6 | 13 |
| 03289-03X5 | 3 | 5 | 12,6 | 13 |
| 03289-03X65 | 3 | 6,5 | 15,7 | 16 |
| 03289-04X5 | 4 | 5 | 12,6 | 13 |
| 03289-04X65 | 4 | 6,5 | 15,7 | 16 |
| 03289-04X75 | 4 | 7,5 | 18,6 | 19 |
| 03289-05X65 | 5 | 6,5 | 15,7 | 16 |
| 03289-05X75 | 5 | 7,5 | 18,6 | 19 |
| 03289-05X9 | 5 | 9 | 21,6 | 22 |
| 03289-06X9 | 6 | 9 | 21,6 | 22 |
| 03289-06X10 | 6 | 10 | 24,5 | 25 |
| 03289-06X11 | 6 | 11 | 27,3 | 28 |
| 03289-08X11 | 8 | 11 | 27,3 | 28 |
| 03289-08X13 | 8 | 13 | 31,4 | 32 |
| 03289-10X13 | 10 | 13 | 31,4 | 32 |
| 03289-10X16 | 10 | 16 | 43,1 | 45 |