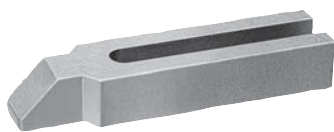


Stepped clamps

forked with nose, steel and aluminium

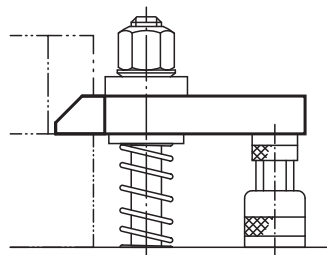
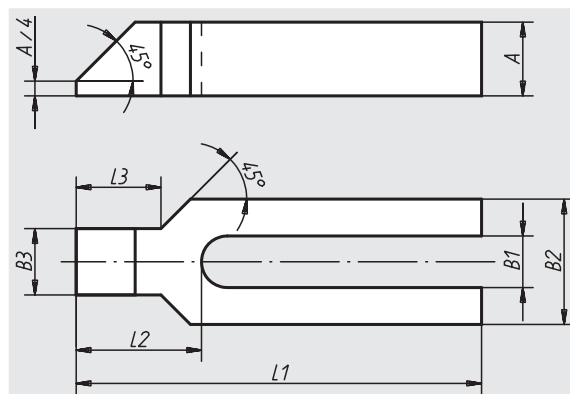


Material:
Tempered steel or EN AW-7022

Surface finish:
Painted

Sample order:
nlm 04130-12

Note:
With concave washers, use the wide series 07420 form G.



Order No.	Material	L1	A	B1	B2	B3	L2	L3	for screw	Approx. weight kg
04130-08	steel	100	15	9	30	16	32	18	M8	0,240
04130-10	steel	125	20	11	30	20	38	24	M10	0,380
04130-12	steel	160	25	14	40	24	47	30	M12/M14	0,800
04130-121	steel	200	25	14	40	24	47	30	M12/M14	1,000
04130-16	steel	200	30	18	50	28	57	36	M16/M18	1,500
04130-161	steel	250	30	18	50	28	57	36	M16/M18	1,850
04130-20	steel	250	40	22	60	35	68	45	M20/M22	2,900
04130-201	steel	315	40	22	60	35	68	45	M20/M22	3,600
04130-24	steel	250	40	26	70	43	83	56	M24	3,400
04130-241	steel	315	40	26	70	43	83	56	M24	4,300
04130-30	steel	315	50	34	80	50	88	56	M30/M32	6,000
04130-301	steel	400	50	34	80	50	88	56	M30/M32	7,300
04130-208	aluminium	100	15	9	30	16	32	18	M8	0,084
04130-210	aluminium	125	20	11	30	20	38	24	M10	0,133
04130-212	aluminium	160	28	14	40	24	47	30	M12/M14	0,280
04130-2121	aluminium	200	36	14	40	24	47	30	M12/M14	0,357
04130-216	aluminium	200	36	18	50	28	57	36	M16/M18	0,526
04130-2161	aluminium	250	40	18	50	28	57	36	M16/M18	0,649
04130-220	aluminium	250	40	22	60	35	68	45	M20/M22	1,017
04130-2201	aluminium	315	48	22	60	35	68	45	M20/M22	1,263
04130-224	aluminium	250	40	26	70	43	83	56	M24	1,192
04130-2241	aluminium	315	48	26	70	43	83	56	M24	1,508
04130-230	aluminium	315	50	34	80	50	88	56	M30/M32	2,105
04130-2301	aluminium	400	50	34	80	50	88	56	M30/M32	2,561