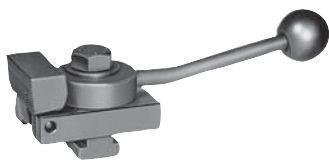


Cam-operated edge clamps

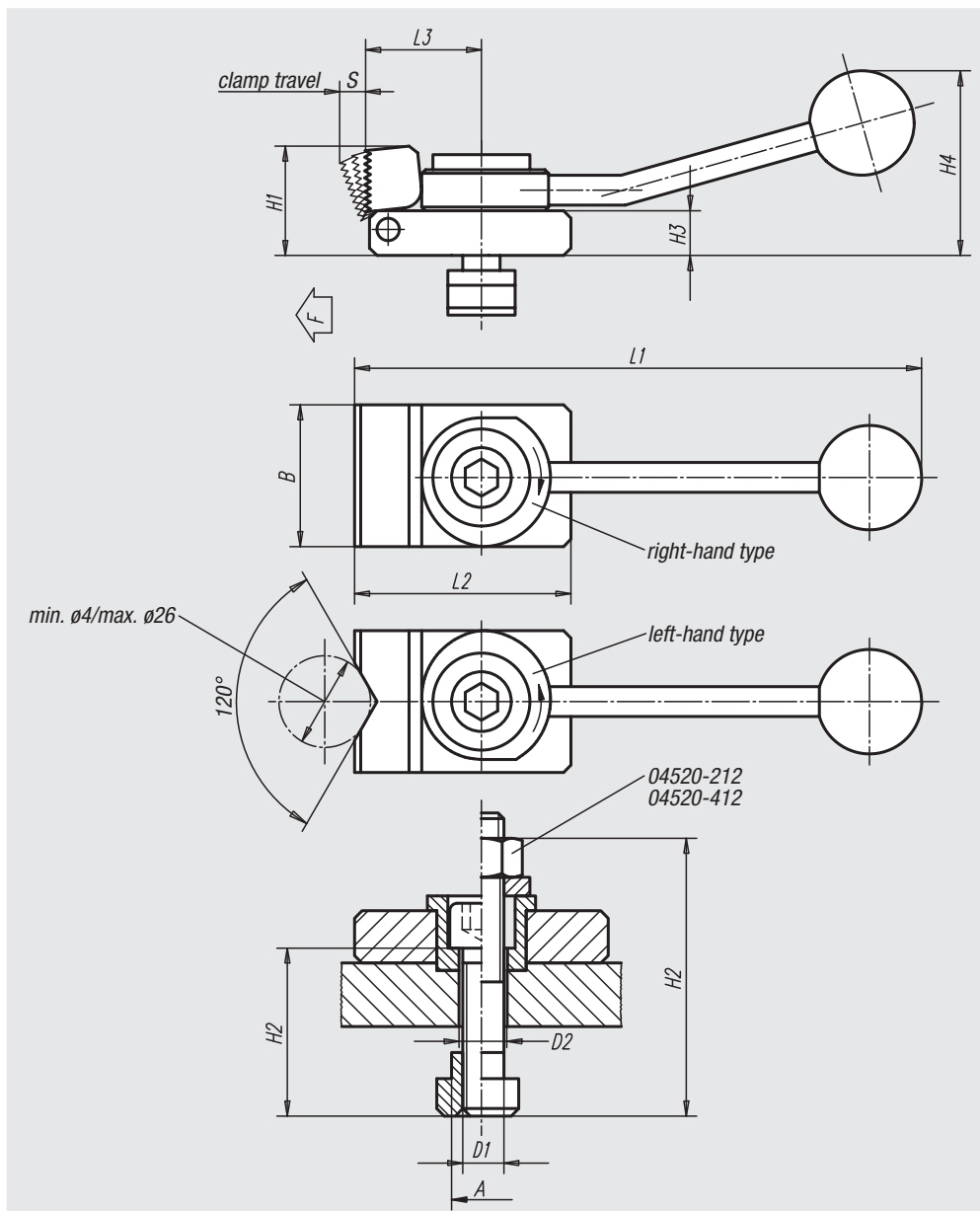
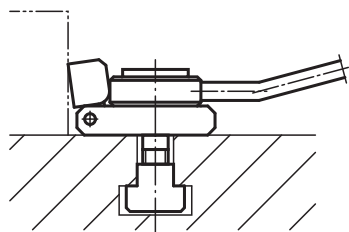


Material:
Steel

Surface finish:
Case-hardened, black oxide finish and ground

Sample order:
nlm 04520-114X2

Note:
The cam-operated edge clamp is a rapid-action clamp, with which parts for machining can be pressed simultaneously against the solid stops and on a seat by the pivoting jaw. Its flat construction allows the full surface of parts to be machined without having to change the clamp. When released, the clamping jaw is retracted by the force of a spring.
Using the support 04512 the cam-operated edge clamp can also be placed in the desired position transversely to the T-slot.



Order No. left-hand type	Order No. right-hand type	Surface finish	slot dimension A	D1	D2	L1	L2	L3	B	H1	H2	H3	H4	S	F max. kN	Approx. weight kg
04520-110X1	04520-310X1	even jaw	10	M8	8,4	132	50	32	32	20	30	8	40	3	3,5	0,220
04520-110X2	04520-310X2	V-block jaw	10	M8	8,4	132	50	32	32	20	30	8	40	3	3,5	0,220
04520-112X1	04520-312X1	even jaw	12	M8	8,4	132	50	32	32	20	30	8	40	3	3,5	0,220
04520-112X2	04520-312X2	V-block jaw	12	M8	8,4	132	50	32	32	20	30	8	40	3	3,5	0,220
04520-212X1	04520-412X1	even jaw	12	M12	12,5	190	72	40	48	38	60	16	62	4	7	0,860
04520-212X2	04520-412X2	V-block jaw	12	M12	12,5	190	72	40	48	38	60	16	62	4	7	0,860
04520-114X1	04520-314X1	even jaw	14	M8	8,4	132	50	32	32	20	30	8	40	3	3,5	0,220
04520-114X2	04520-314X2	V-block jaw	14	M8	8,4	132	50	32	32	20	30	8	40	3	3,5	0,220
04520-214X1	04520-414X1	even jaw	14	M12	12,5	190	72	40	48	38	40	16	62	4	7	0,870
04520-214X2	04520-414X2	V-block jaw	14	M12	12,5	190	72	40	48	38	40	16	62	4	7	0,870
04520-216X1	04520-416X1	even jaw	16	M12	12,5	190	72	40	48	38	40	16	62	4	7	0,890
04520-216X2	04520-416X2	V-block jaw	16	M12	12,5	190	72	40	48	38	40	16	62	4	7	0,890
04520-218X1	04520-418X1	even jaw	18	M12	12,5	190	72	40	48	38	40	16	62	4	7	0,910
04520-218X2	04520-418X2	V-block jaw	18	M12	12,5	190	72	40	48	38	40	16	62	4	7	0,910