

Taper clamping units

form A



Material, surface finish:

Body in hardened tool steel, clamping segments in hardened tool steel (49-51 HRC) with black oxide finish, taper surfaces ground

Sample order:

nIm 04525-1618

Note:

Because of their compact design, the taper clamping units are especially suitable for horizontal and vertical multiple clamping. The hardened and ground taper surfaces make high clamping forces possible. The appropriate taper clamping units can be mounted either in an M.T.P. hole or a T-slot. Inserting a socket head screw to DIN 912 moves the two clamping segments outwards and presses the workpieces against a fixed stop.

The clamping jaws with Order No. 04525-08 are not serrated.

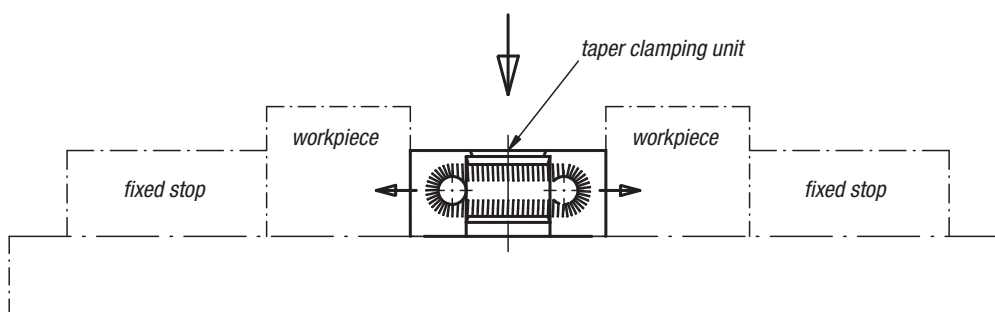
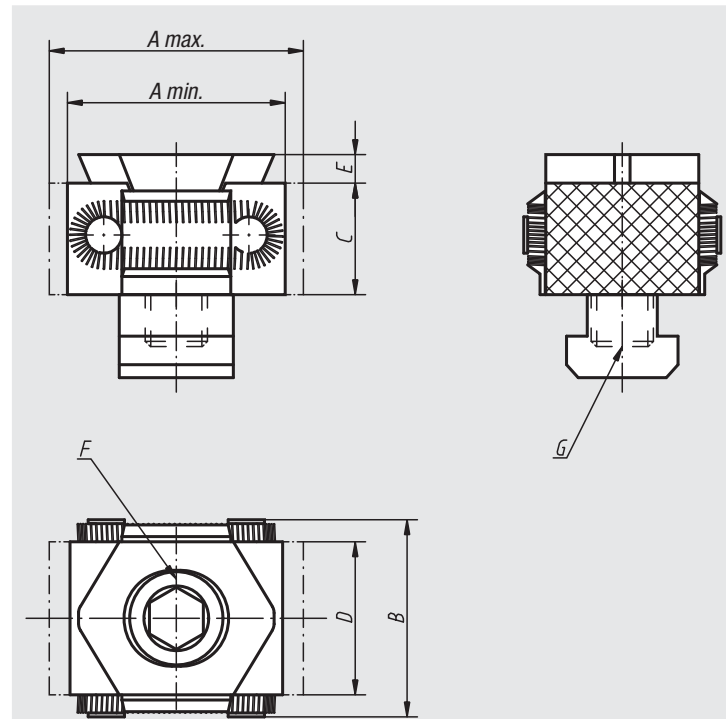
The taper clamping unit can be displaced with the incorporated long hole.

Travel path according to Order No.:

04525-08 = ± 0.5 mm

04525-12 = ± 1.0 mm

04525-16 = ± 1.5 mm



Order No.	A min.	A max.	B	C	D	E	F Socket head screw DIN 912	G	Clamping force kN	Tightening torque Nm	Approx. weight kg
04525-08	27	31	29	15	21	2,5	M8x25	for threaded hole	15	25	0,068
04525-0810	27	31	29	15	21	2,5	M8x25	for T-slot 10	15	25	0,080
04525-12	42	49	41	22	30	4	M12x40	for threaded hole	30	85	0,224
04525-1214	42	49	41	22	30	4	M12x30	for T-slot 14	30	85	0,251
04525-16	57	66	56	29	42	5	M16x60	for threaded hole	50	210	0,583
04525-1618	57	66	56	29	42	5	M16x50	for T-slot 18	50	210	0,638