

Taper clamping units

form B



Material, surface finish:

Body in hardened tool steel, clamping segments in hardened tool steel (49-51 HRC) with black oxide finish, taper surfaces ground

Sample order:

nIm 04527-1214

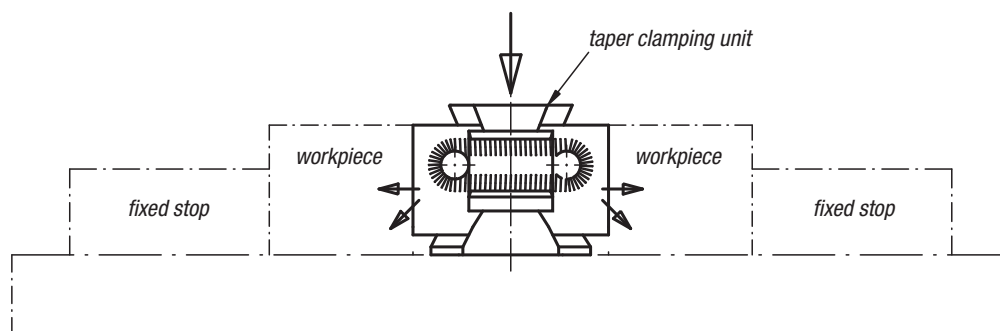
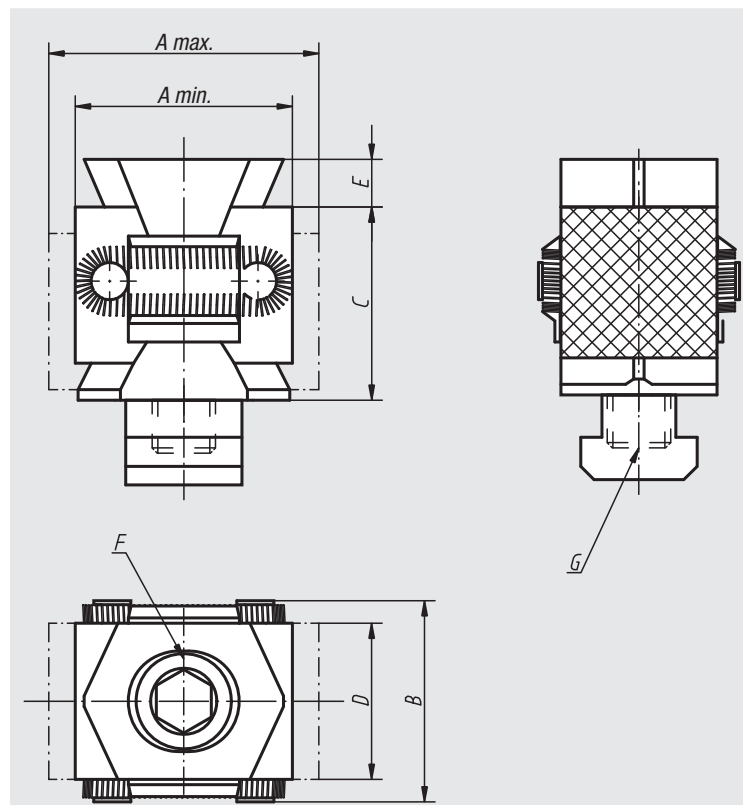
Note:

Because of their compact design, the taper clamping units are especially suitable for horizontal and vertical multiple clamping. The hardened and ground taper surfaces make high clamping forces possible. The appropriate taper clamping units can be mounted either in an M.T.P. hole or a T-slot. Inserting a socket head screw to DIN 912 moves the two clamping segments outwards and presses the workpieces against a fixed stop. The so-called „hold-down effect“ is caused by the double tapers of this version.

Travel path according to Order No.:

04527-12 = ± 1.0 mm

04527-16 = ± 1.5 mm



Order No.	A min.	A max.	B	C	D	E	F Socket head screw DIN 912	G	Clamping force kN	Tightening torque Nm	Approx. weight kg
04527-12	42	49	41	36	30	5	M12x60	for threaded hole	40	85	0,318
04527-1214	42	49	41	36	30	5	M12x50	for T-slot 14	40	85	0,353
04527-16	57	67	56	50	42	5	M16x80	for threaded hole	60	210	0,843
04527-1618	57	67	56	50	42	5	M16x70	for T-slot 18	60	210	0,912