

# Knurled knobs



**Material, surface finish:**

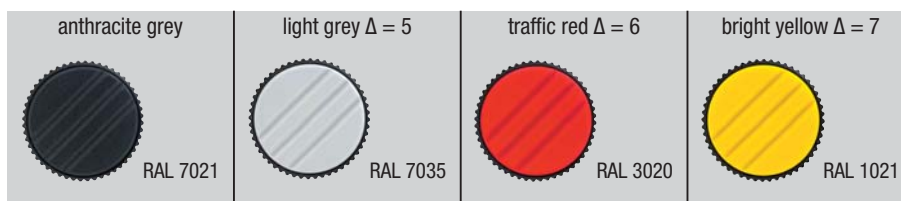
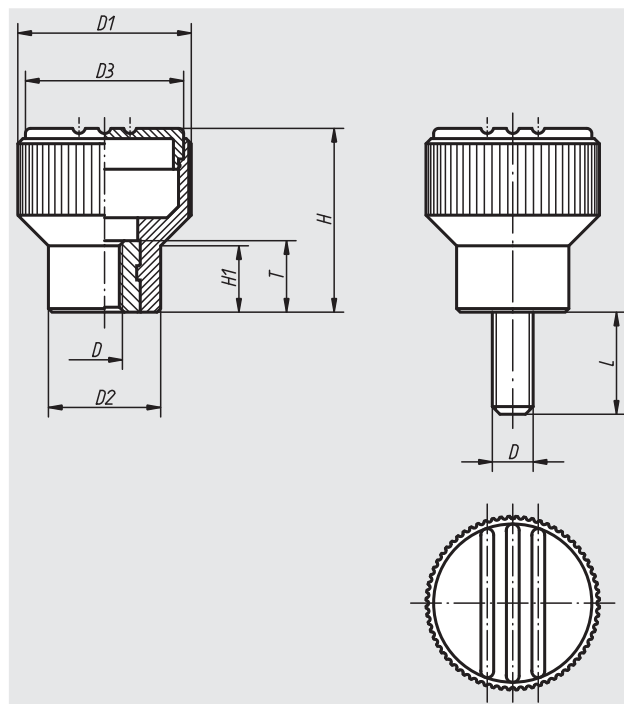
Anthracite grey thermoplastic.  
 Bush and threaded bolt in steel 5.8, blue chromated or in stainless steel 1.4305, natural finish.

**Sample order:**

nIm 06092-01056X20 (cap colour traffic red; please also indicate dimension L)

**Note:**

Δ Add the desired cap colour here. No colour code is required with anthracite grey wheel caps.



## Knurled knobs with internal thread

Order No. bush in steel	Order No. bush in stainless steel	Size	D	D1	D2	D3	H	H1	T
06092-104Δ	06092-0104Δ	1	M4	21	14	19	22	8	10
06092-105Δ	06092-0105Δ	1	M5	21	14	19	22	8	10
06092-106Δ	06092-0106Δ	1	M6	21	14	19	22	8	10
06092-208Δ	06092-0208Δ	2	M8	26	18	23	26	9,5	14
06092-308Δ	06092-0308Δ	3	M8	34	22	31	36	13	14
06092-310Δ	06092-0310Δ	3	M10	34	22	31	36	13	14

## Knurled knobs with external thread

Order No. bolts steel	Order No. bolts stainless steel	Size	D	D1	D2	D3	H	H1	L = screw length
06092-105ΔX	06092-0105ΔX	1	M5	21	14	19	22	8	10/12/15/20/25
06092-106ΔX	06092-0106ΔX	1	M6	21	14	19	22	8	15/20/25/30
06092-208ΔX	06092-0208ΔX	2	M8	26	18	23	26	9,5	20/25/30/40
06092-310ΔX	06092-0310ΔX	3	M10	34	22	31	36	13	20/30/40