

Slanting tube handles


Material:

Connecting tube in aluminium EN AW-6060;
grip leg in polyamide, glass-ball reinforced;
threaded bush in brass

Surface finish:

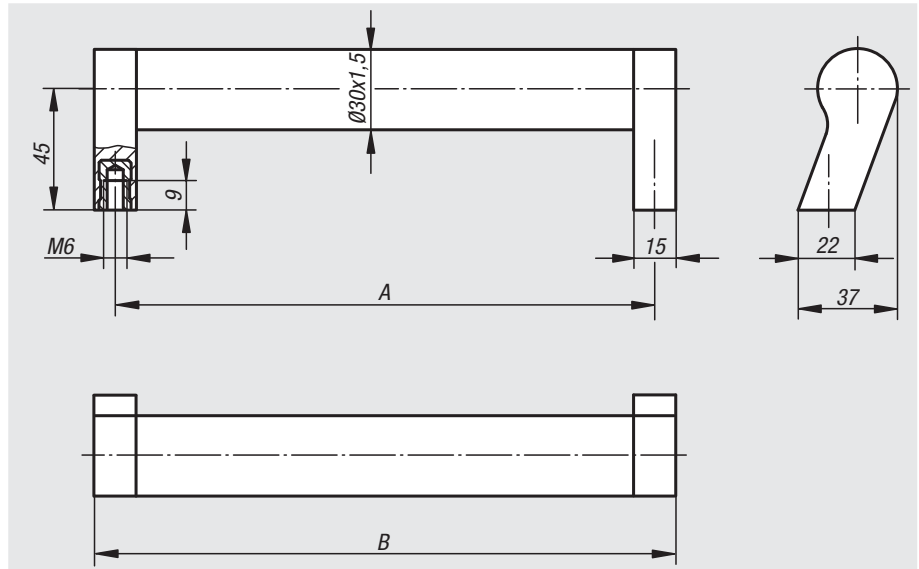
Connecting tube matt-polished anodized;
grip leg black

Sample order:

nIm 06928-2150061

Note:

Slanting tube handles in modern industrial design.
Precision fit of tube on plastic tenon due to clamping webs.



| Order No. | A | B | Load bearing capacity N | Approx. weight kg |
|---------------|-----|-----|-------------------------|-------------------|
| 06928-2150061 | 150 | 165 | 800 | 0,112 |
| 06928-2200061 | 200 | 215 | 800 | 0,130 |
| 06928-2250061 | 250 | 265 | 800 | 0,148 |
| 06928-2300061 | 300 | 315 | 800 | 0,165 |
| 06928-2350061 | 350 | 365 | 800 | 0,184 |
| 06928-2400061 | 400 | 415 | 800 | 0,201 |