

Stirrup-shaped handles, high-polish chromium-plated



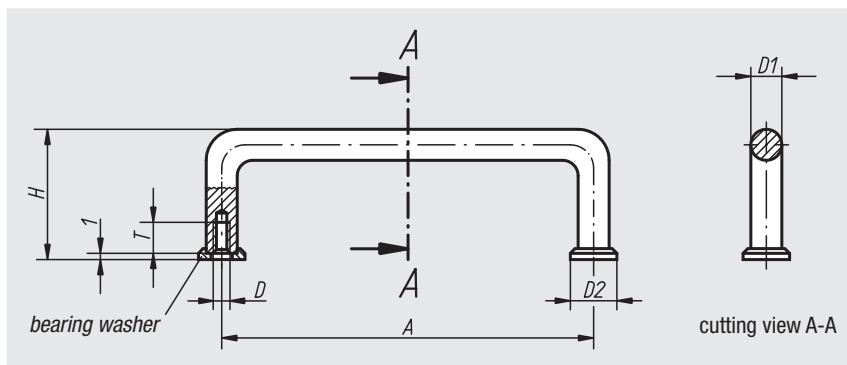
Material:
Steel

Surface finish:
Very finely ground and high-polish chromium-plated

Sample order:
nlm 06930-10204

Note:
These stirrup-shaped handles are used primarily on optical devices, laboratory installations, audio, video and hi-fi equipment, etc. The bearing washers are supplied unattached.

On request:
Other surface finishes.



Order No.	A	D	D1	D2	H	T	Load bearing capacity N	Approx. weight kg
06930-03203	32	M3	5	8	21	6	1000	0,008
06930-04203	42	M3	5	8	25	6	1000	0,010
06930-05503	55	M3	5	8	25	6	1000	0,013
06930-07603	76	M3	5	8	25	6	1000	0,015
06930-08803	88	M3	5	8	25	6	1000	0,018
06930-03204	32	M4	8	12,5	33	8	1000	0,028
06930-05504	55	M4	8	12,5	33	8	1000	0,038
06930-06404	64	M4	8	12,5	33	8	1000	0,041
06930-08804	88	M4	8	12,5	33	8	1000	0,050
06930-09604	96	M4	8	12,5	33	8	1000	0,056
06930-09804	98	M4	8	12,5	33	8	1000	0,057
06930-10204	102	M4	8	12,5	33	8	1000	0,058
06930-12004	120	M4	8	12,5	33	8	1000	0,065
06930-12804	128	M4	8	12,5	33	8	1000	0,068
06930-13604	136	M4	8	12,5	33	8	1000	0,071
06930-05505	55	M5	10	15	41	10	1000	0,067
06930-08805	88	M5	10	15	41	10	1000	0,087
06930-10005	100	M5	10	15	41	10	1000	0,094
06930-10205	102	M5	10	15	41	10	1000	0,095
06930-11505	115	M5	10	15	41	10	1000	0,103
06930-12005	120	M5	10	15	41	10	1000	0,105
06930-13605	136	M5	10	15	41	10	1000	0,112
06930-18005	180	M5	10	15	41	10	1000	0,142
06930-20005	200	M5	10	15	41	10	1000	0,154
06930-23505	235	M5	10	15	41	10	1000	0,175
06930-25005	250	M5	10	15	41	10	1000	0,184