

# Thrust Pads

to DIN 6311 extended

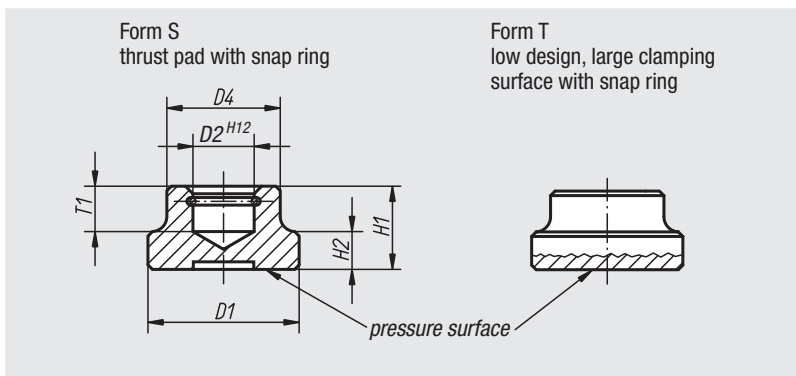
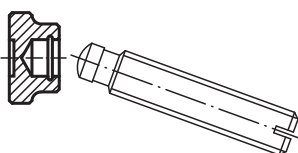


**Material:**  
Steel case-hardened.  
Snap ring spring steel.

**Surface finish:**  
Black oxide finish.

**Sample order:**  
nlm 07140-12

**Note:**  
When fitting the thrust pad, ensure that it is inclined as far as possible in the direction of the snap ring opening. The snap ring is supplied assembled.



Order No.	Form	D1	D2	D4	H1	H2	T1	For grub screws with trust point DIN 6332	Approx. weight g
07140-06	S	12	4,6	10	7	2,5	4	M6	4,4
07140-08	S	16	6,1	12	9	4	5	M8	9
07140-10	S	20	8,1	15	11	5	6	M10	17
07140-12	S	25	8,1	18	13	7	7	M12	33
07140-16	S	32	12,1	22	15	7	7,5	M16	57
07140-20	S	40	15,6	28	16	9	8	M20	103
07140-108	T	25	6,1	12	8	4	4,5	M8	17
07140-110	T	32	8,1	18	10	6	6	M10 / M12	42
07140-116	T	40	12,1	22	12	7	7	M16	75

# Spring plungers

with pin fixing

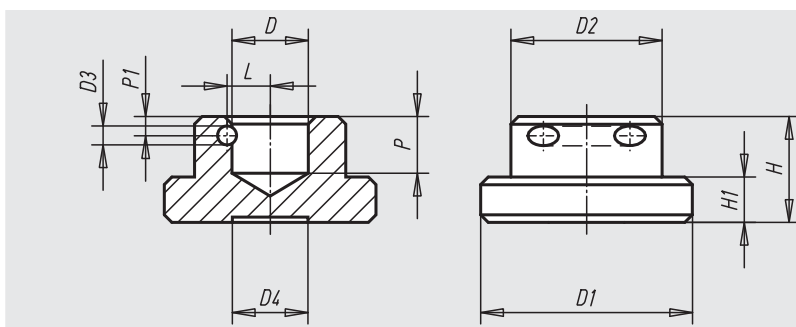


**Material:**  
Free-cutting steel

**Surface finish:**  
Case-hardened and black oxide finish

**Sample order:**  
nlm 07141-10

**Note:**  
The pin is used to hold the pad on screw 07120.



Order No.	D	D1	D2	D3	D4	H	H1	L	P	P1	Approx. weight g
07141-06	4,6	12	10	2	5	7	2,5	2,8	4	1,8	5
07141-08	6,1	16	12	2	7	9	4	3,5	5	2	9
07141-10	8,1	20	15	2	8	11	5	4,6	7	2,7	17
07141-12	8,1	25	18	2	10	13	6	4,6	7	2,7	33
07141-14	10,1	28	20	2,5	10	14	6	5,7	7,5	2,5	37
07141-16	12,1	32	22	2,5	14	15	7	6,7	7,5	2,5	57
07141-20	15,6	40	28	2,5	18	16	9	8,3	8	3	103

01000  
02000  
03000  
04000  
05000  
06000  
07000  
08000  
09000  
20000  
21000  
22000  
23000