

Pivot and pull clamp double-acting, max. 400 bar



ROEMHELD
HILMA ■ STARK



Applications:

- for automatic clamping of dies on press rams

Function:

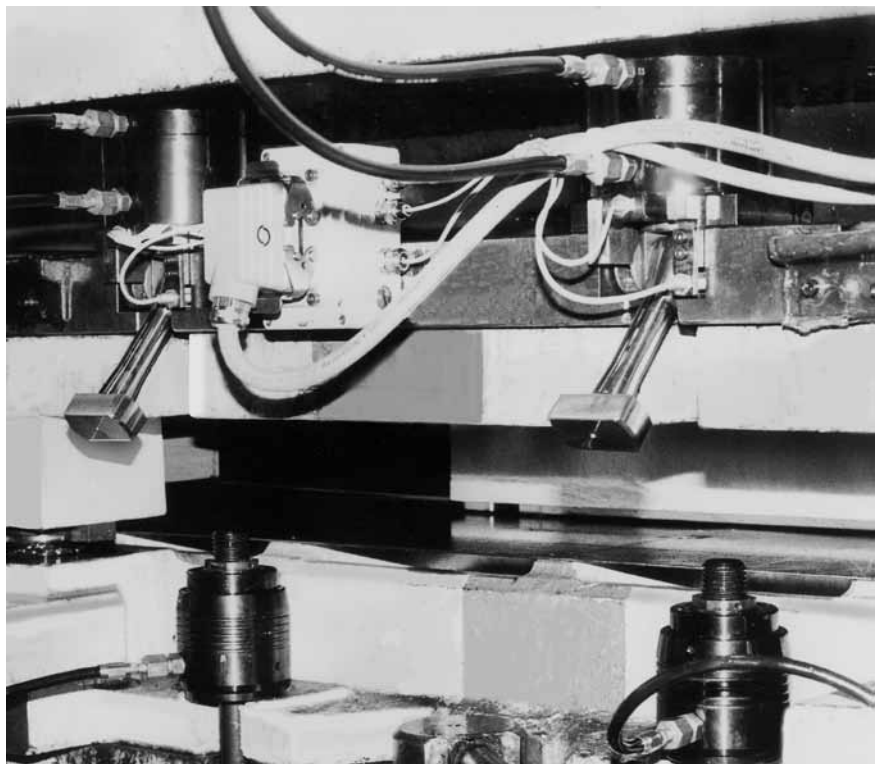
A control mechanism translates the stroke of the double-acting piston into a tilting and lifting movement of the tie rod. For releasing the die, the tie rod pivots by 15°. The clamping force is transmitted to the clamping point in the axial direction of the tie rod. The clamping and unclamping positions are monitored by inductive proximity switches.

Max. temperature: 85°C.

Higher temperatures upon request.

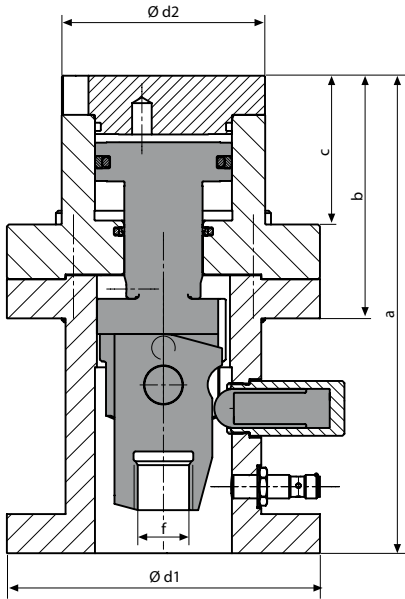
Special features:

- ◆ 10 mm clamping stroke, therefore high adaptability to varying heights of clamping edges
- ◆ high functional reliability ensured by position monitoring and an automatic cycle
- ◆ the tie rod can be pivoted, therefore no collision edges when inserting the die
- ◆ optimum utilisation of the ram surface
- ◆ easy and rapid installation
- ◆ very suitable for retrofitting



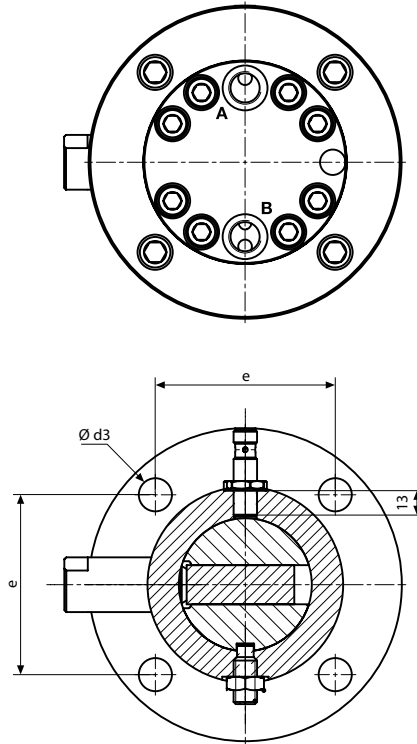


Pivot and pull clamp
double-acting, max. 400 bar



Suitable for temperatures of up to 85°C
(higher temperatures upon request)

Max. flow rate: 16 cm³



Clamping force at 400 bar (kN) (other clamping forces on request)	104	160
Clamping stroke max. (mm)	7	7
Clamping range (mm)	15 – 22	15 – 22
Total stroke (mm)	24	26
Swing stroke (mm)	10	10
Oil consumption clamping (cm ³)	52	108
Oil consumption unclamping (cm ³)	77	158
a (mm)	244	348
b (mm)	124	147
c (mm)	76	87
d1 Ø (mm)	160	192
d2 Ø (mm)	104	126
d3 Ø (mm)	17	21
e (mm)	92	114
f (mm)	M30	M36
Part no.	8.2185.1000	8.2186.1000

Recommended accessories:

10 m connecting cable for inductive proximity switches:
Part no. 5700014

5 m connecting cable angled at 90°:
Part no. 2.0975.0024

Position monitoring

Nominal tripping cycle S_N	2 mm
Ambient temperature T_A	-40° ... +85°C
Operating voltage U_B	10 - 30 V DC
Max. constant current	200 mA
Switching function	N/O contact (PNP)

Initial settings

