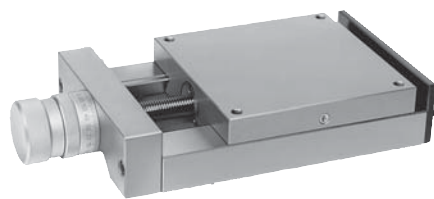


Dovetail slides

with spindle and knurled micrometer knob



Material:

GJL 250.

Surface finish:

Natural finish, ground

Sample order:

nIm 21032-075130

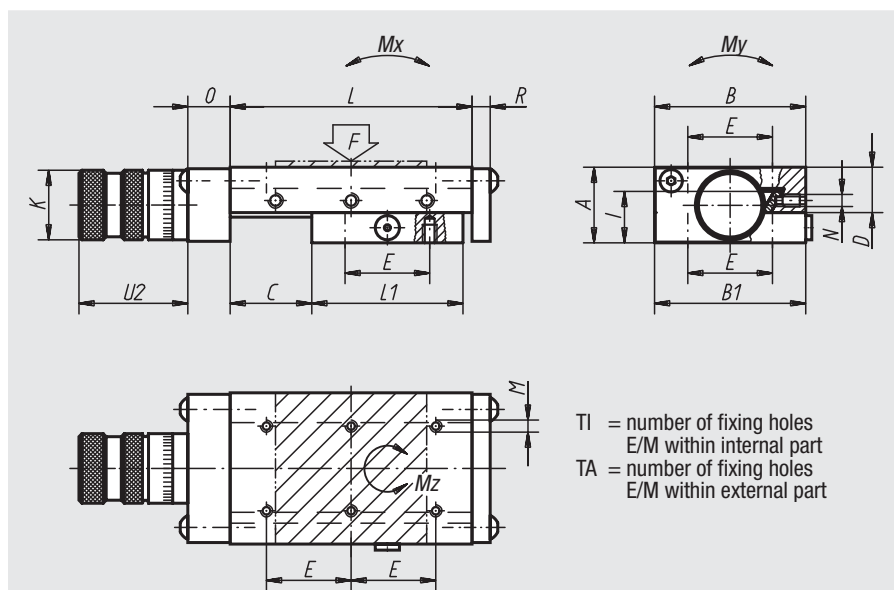
Note:

The central adjustment screw „N“ can also be replaced by a clamp lever part no. 06460. The micrometer screw is graduated in 0.02 mm increments. Other graduations are available on request.

The stated permissible load values (F) are designed for dynamic stress with a lifespan of 1 million lifting operations.

For static stress the permissible load is equal to 10 times the value F.

The torque values apply only if the dovetail slides are centred.



TI = number of fixing holes
E/M within internal part
TA = number of fixing holes
E/M within external part

Order No.	A	B	B1	C	D	E	TI	TA	I	K	L	L1	M	N	O	R	U2	Spindle	F (N)	Mx Nm	My Nm	Mz Nm	Approx. weight kg
21032-050080	25	50	49,5	25	15	28	4	6	17,6	23	80	50	M4	M5	19	6	31	M6x1	109	2	6	2	0,720
21032-050105	25	50	49,5	50	15	28	4	8	17,6	23	105	50	M4	M5	19	6	31	M6x1	61	4	9	4	0,830
21032-050205	25	50	49,5	100	15	28	8	16	17,6	23	205	100	M4	M5	19	6	31	M6x1	114	7	12	8	1,490
21032-075105	32	75	74,5	25	19,5	62	4	4	22,5	30	105	75	M5	M5	21	6	38	M10x1	290	5	19	6	1,910
21032-075130	32	75	74,5	50	19,5	62	4	4	22,5	30	130	75	M5	M5	21	6	38	M10x1	168	5	19	6	2,130
21032-075155	32	75	74,5	75	19,5	62	4	4	22,5	30	155	75	M5	M5	21	6	38	M10x1	118	5	19	6	2,340
21032-100135	40	100	99,5	25	24	86	4	4	27,5	30	135	100	M6	M6	21	6	38	M10x1	586	11	43	12	4,040
21032-100160	40	100	99,5	50	24	86	4	4	27,5	30	160	100	M6	M6	21	6	38	M10x1	351	11	43	12	4,380
21032-100260	40	100	99,5	100	24	86	4	6	27,5	30	260	150	M6	M6	21	6	38	M10x1	395	23	63	26	6,460
21032-200310	60	200	199	100	37	170	4	4	41,5	47	310	200	M8	M8	28	8	53	Tr16x2	1078	66	283	71	24,700