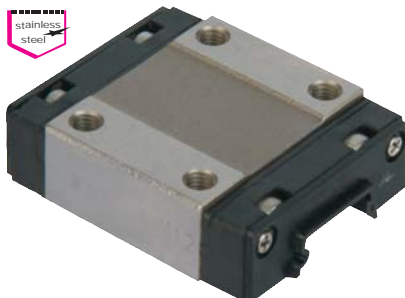


# Miniature carriages

stainless steel



**Material:**  
 Body, stainless steel type 1.4034;  
 balls, stainless steel type 1.4034;  
 transfer sections, plastic

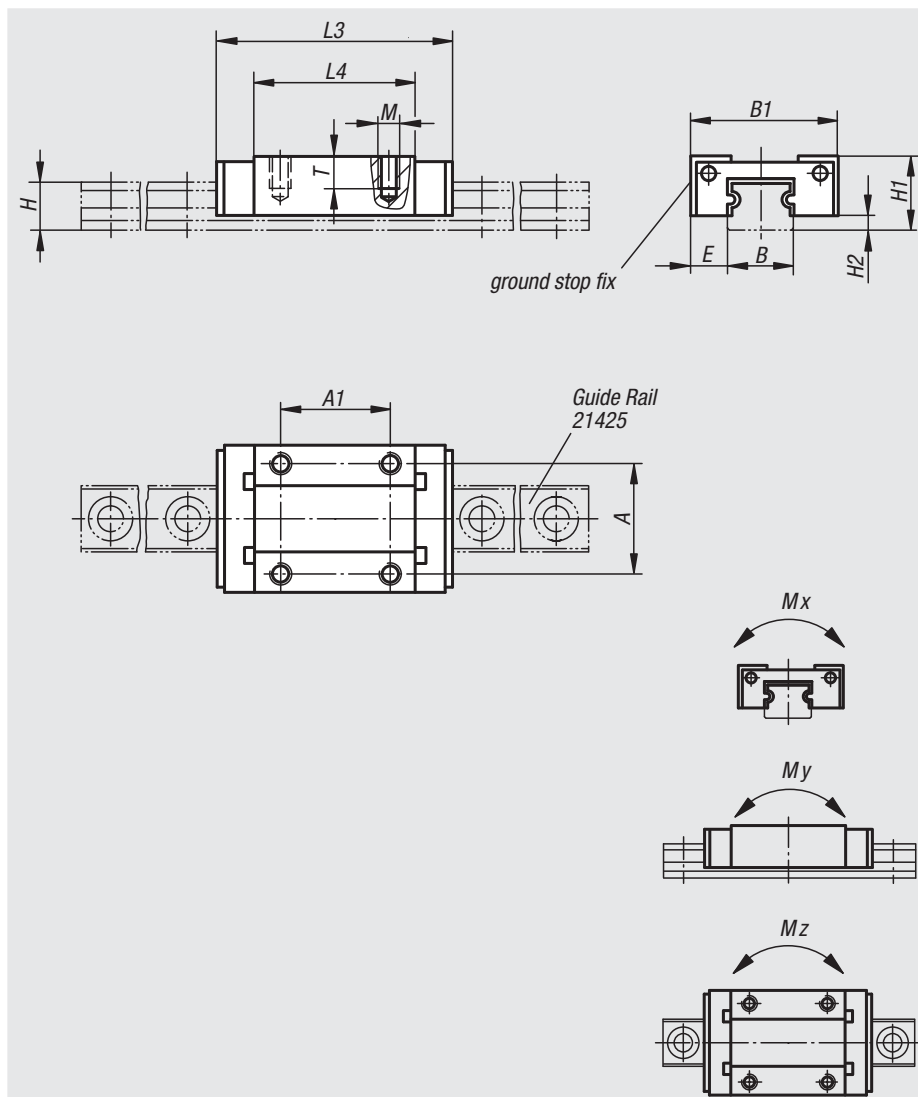
**Surface finish:**  
 Natural finish

**Sample order:**  
 nlm 21420-07102301

**Note:**  
 Standard miniature carriage with ball bearing guide of precision N without initial tension (Z0). With end seal on both sides.  
 4-point ball bearing system with identical load angles and 2 ball bearings per carriage. Thus loads can be uniformly absorbed from all sides.

Max. acceleration: 80 m/s<sup>2</sup>.  
 Maximum traversing speed 3 m/s.  
 Application temperature -20 °C to +80 °C.

**Attention:**  
 Always use the supplied mounting rail, as otherwise the the ball holder in the carriage is not guaranteed.



Order No.	Surface finish	Size	Mx Nm	My Nm	Mz Nm	Dynamic base loads N	Static base loads N
21420-07102301	standard	7	5,1	2,55	2,55	880	1370
21420-09103101	standard	9	10,4	5,1	5,1	1470	2250
21420-12103501	standard	12	14,7	8,04	8,72	2665	4020
21420-15104301	standard	15	30,2	16,5	17,9	4410	6570

Order No.	Surface finish	Size	A	A1	B	B1	E	H	H1	H2	L3	L4	M	T	Approx. weight kg
21420-07102301	standard	7	12	8	7	17	5	4,7	8	1,5	23,5	13,5	M2	2,5	0,013
21420-09103101	standard	9	15	10	9	20	5,5	5,5	10	2,2	31	20	M3	3	0,018
21420-12103501	standard	12	20	15	12	27	7,5	7,5	13	3	35	20,8	M3	3,5	0,037
21420-15104301	standard	15	25	20	15	32	8,5	9,5	16	4	43	25,7	M3	4	0,069

01000  
02000  
03000  
04000  
05000  
06000  
07000  
08000  
09000  
20000  
21000  
22000  
23000